



THE SCHOOL BOARD OF SARASOTA COUNTY, FLORIDA
Landings Administrative Complex
1980 Landings Blvd.
11:15 AM

November 6, 2024 Monthly Work Session

NOTICE REGARDING TIMING OF POSTING SUPPORTING MATERIALS FOR WORKSHOP TOPICS The district holds transparency, accuracy, and thoroughness as core values in all its operations, including preparing and conducting our board workshops. All stakeholders must be provided access to accurate and comprehensive information, which is fundamental to fostering an environment of trust and constructive dialogue. To uphold these values, the district may release supporting materials for workshop topics once these documents are in their final form. This practice is aligned with our commitment to prevent potential misunderstandings or misinterpretations arising from circulating preliminary or draft documents. We aim to ensure that the information shared accurately reflects the topics discussed. Workshops are dedicated to discussion among board members and facilitated to encourage open dialogue, question-and-answer sessions with presenters, and brainstorming.

The informal setting allows for a deeper exploration of topics without the pressure of immediate decision-making. According to School Board Policy 2.22, no formal action may be taken by the School Board during workshops. We understand the importance of providing our stakeholders access to supporting materials. However, the process of finalizing these materials necessitates a thorough review and potential revisions to guarantee their accuracy and completeness. As stated in School Board Policy 2.22, supporting documents for regular school board meeting agenda items for which the board will take formal action will be posted in advance. This ensures that stakeholders have sufficient time to review materials related to decisions that directly impact the district. However, for workshop topics, there may be instances where supporting materials are not posted until the day of the session. This timing reflects our commitment to accuracy and providing the most current and comprehensive information.

Call to Order

1. DISTRICT CALENDAR

Contact:

SCHWIED

2. WELLEN PARK NAMING & MASCOT

Contact:

GREEN

3. K-8 BOUNDARY ADVISORY COMMITTEE RECOMMENDATIONS

Contact:

KEMP

Board Members' Comments

4. BOARD COMMENTS

Contact:

BOARD

Adjournment



November 6, 2024 Board Meeting
Agenda Item 1.

Title

DISTRICT CALENDAR

Contact

SCHWIED

ATTACHMENTS:

Description	Upload Date	Type
2025-2026 Calendar	11/11/2024	Cover Memo
2026-2027 Calendar	11/11/2024	Cover Memo

2025/26

Student Calendar

Committee Choice

July 2025						
S	M	T	W	Th	F	S
		1	2	3	4	5
6	7	8	9	10	11	12
13	14	15	16	17	18	19
20	21	22	23	24	25	26
27	28	29	30	31		

0	0	Days in Quarter
0		Student Days

August 2025						
S	M	T	W	Th	F	S
					1	2
3	4	5	6	7	8	9
10	11	12	13	14	15	16
17	18	19	20	21	22	23
24 31	25	26	27	28	29	30

Aug. 11 - First Day of School

0	15	Days in Quarter
15		Student Days

September 2025						
S	M	T	W	Th	F	S
		2	3	4	5	6
7	8	9	10	11	12	13
14	15	16	17	18	19	20
21	22	23	24	25	26	27
28	29	30				

Sept. 1 - Labor Day


0	21	Days in Quarter
21		Student Days

Mth	Days	Qtr
Aug	15	1st
Sept	21	
Oct	8	
Oct	14	2nd
Nov	15	
Dec	15	
Jan	18	3rd
Feb	19	
Mar	10	
Mar	6	47
Apr	21	4th
May	18	
	180	
		180

October 2025						
S	M	T	W	Th	F	S
			1	2	3	4
5	6	7	8	9	10	11
12	13 [Ⓢ]	14	15	16	17	18
19	20	21	22	23	24	25
26	27	28	29	30	31	

Oct. 10 - Last Day of 1st Quarter
Oct. 13 - Professional Day

8	14	Days in Quarter
22		Student Days

November 2025						
S	M	T	W	Th	F	S
2	3	4	5	6	7	1 8
9	10	11	12	13	14	15
16	17	18	19	20	21	22
23	24	25	26			29
30						


Nov. 24-28 - Thanksgiving Break

0	15	Days in Quarter
15		Student Days

December 2025						
S	M	T	W	Th	F	S
	1	2	3	4	5	6
7	8	9	10	11	12	13
14	15	16	17	18	19	20
21	22	23	24	25	26	27
28	29	30	31			

Dec. 19 - Last Day of 2nd Quarter
Dec. 22-31 - Winter Break

0	15	Days in Quarter
15		Student Days

January 2026						
S	M	T	W	Th	F	S
				1	2	3
4	5 [Ⓢ]	6	7	8	9	10
11	12	13	14	15	16	17
18		20	21	22	23	24
25	26	27	28	29	30	31

Jan. 1-2 - Winter Break
Jan. 5 - Professional Day
Jan. 19 - MLK Jr. Day

0	18	Days in Quarter
18		Student Days

February 2026						
S	M	T	W	Th	F	S
1	2	3	4	5	6	7
8	9	10	11	12	13	14
15		17	18	19	20	21
22	23	24	25	26	27	28

Feb. 16 - Presidents Day

0	19	Days in Quarter
19		Student Days

March 2026						
S	M	T	W	Th	F	S
1	2	3	4	5	6	7
8	9	10	11	12	13	14
15	16	17	18	19	20	21
22	23 [Ⓢ]	24	25	26	27	28
29	30	31				

Mar. 13 - Last Day of 3rd Quarter
Mar. 16-20 - Spring Break
Mar. 23 - Professional Day

10	6	Days in Quarter
16		Student Days

April 2026						
S	M	T	W	Th	F	S
			1	2	3 [Ⓢ]	4
5	6	7	8	9	10	11
12	13	14	15	16	17	18
19	20	21	22	23	24	25
26	27	28	29	30		

Apr. 3 - Mini Break

0	21	Days in Quarter
21		Student Days


May 2026						
S	M	T	W	Th	F	S
					1	2
3	4	5	6	7	8	9
10	11	12	13	14	15	16
17	18	19	20	21	22	23
24 31		26	27	28 [Ⓢ]	29 [Ⓢ]	30

May 25 - Memorial Day
May 27 - Last Day of School

0	18	Days in Quarter
18		Student Days

June 2026						
S	M	T	W	Th	F	S
	1	2	3	4	5	6
7	8	9	10	11	12	13
14	15	16	17	18	19	20
21	22	23	24	25	26	27
28	29	30				

0	0	Days in Quarter
0		Student Days

 = Inclement weather makeup day if needed

2026/27

Student Calendar

Committee Choice

July 2026						
S	M	T	W	Th	F	S
			1	2	3	4
5	6	7	8	9	10	11
12	13	14	15	16	17	18
19	20	21	22	23	24	25
26	27	28	29	30	31	

0	0	Days in Quarter
0		Student Days

August 2026						
S	M	T	W	Th	F	S
2	3	4	5	6	7	1/8
9	10	11	12	13	14	15
16	17	18	19	20	21	22
23	24	25	26	27	28	29
30	31					

Aug. 10 - First Day of School

0	16	Days in Quarter
16		Student Days

September 2026						
S	M	T	W	Th	F	S
		1	2	3	4	5
6		8	9	10	11	12
13	14	15	16	17	18	19
20	21	22	23	24	25	26
27	28	29	30			

Sept. 7 - Labor Day

0	21	Days in Quarter
21		Student Days


Mth	Days	Qtr
Aug	16	1st
Sept	21	
Oct	7	
Oct	14	2nd
Nov	16	
Dec	14	
Jan	18	3rd
Feb	19	
Mar	9	
Mar	7	46
Apr	21	4th
May	18	
	180	
		180

October 2026						
S	M	T	W	Th	F	S
				1	2	3
4	5	6	7	8	9	10
11	12 [Ⓢ]	13	14	15	16	17
18	19	20	21	22	23	24
25	26	27	28	29	30	31

Oct. 9 - Last Day of 1st Quarter

Oct. 12 - Professional Day

7	14	Days in Quarter
21		Student Days

November 2026						
S	M	T	W	Th	F	S
1	2	3	4	5	6	7
8	9	10	11	12	13	14
15	16	17	18	19	20	21
22	23	24	25		28	
29	30					

Nov. 23-27 - Thanksgiving Break


0	16	Days in Quarter
16		Student Days

December 2026						
S	M	T	W	Th	F	S
		1	2	3	4	5
6	7	8	9	10	11	12
13	14	15	16	17	18	19
20	21	22	23	24	25	26
27	28	29	30	31		

Dec. 18 - Last Day of 2nd Quarter

Dec. 21-31 - Winter Break

0	14	Days in Quarter
14		Student Days

January 2027						
S	M	T	W	Th	F	S
					1	2
3	4 [Ⓢ]	5	6	7	8	9
10	11	12	13	14	15	16
17		19	20	21	22	23
24/31	25	26	27	28	29	30

Jan. 1 - Winter Break

Jan. 4 - Professional Day

Jan. 18 - MLK Jr. Day

0	18	Days in Quarter
18		Student Days

February 2027						
S	M	T	W	Th	F	S
	1	2	3	4	5	6
7	8	9	10	11	12	13
14		16	17	18	19	20
21	22	23	24	25	26	27
28						

Feb. 15 - Presidents Day

0	19	Days in Quarter
19		Student Days

March 2027						
S	M	T	W	Th	F	S
	1	2	3	4	5	6
7	8	9	10	11	12 [Ⓢ]	13
14	15	16	17	18	19	20
21	22	23	24	25	26 [Ⓢ]	27
28	29	30	31			

Mar. 11 - Last Day of 3rd Quarter

Mar. 12 - Professional Day

Mar. 15-19 - Spring Break

Mar. 26 - Mini Break

9	7	Days in Quarter
16		Student Days

April 2027						
S	M	T	W	Th	F	S
				1	2	3
4	5	6	7	8	9	10
11	12	13	14	15	16 [Ⓢ]	17
18	19	20	21	22	23	24
25	26	27	28	29	30	

Apr. 16 - Mini Break

0	21	Days in Quarter
21		Student Days

May 2027						
S	M	T	W	Th	F	S
2	3	4	5	6	7	1/8
9	10	11	12	13	14	15
16	17	18	19	20	21	22
23	24	25	26	27 [Ⓢ]	28 [Ⓢ]	29
30						


May 26 - Last Day of School

May 31 - Memorial Day

0	18	Days in Quarter
18		Student Days

June 2027						
S	M	T	W	Th	F	S
		1	2	3	4	5
6	7	8	9	10	11	12
13	14	15	16	17	18	19
20	21	22	23	24	25	26
27	28	29	30			

0	0	Days in Quarter
0		Student Days

 = Inclement weather makeup day if needed



November 6, 2024 Board Meeting
Agenda Item 2.

Title

WELLEN PARK NAMING & MASCOT

Contact

GREEN

ATTACHMENTS:

Description	Upload Date	Type
Wellen Park	11/11/2024	Cover Memo

WELLEN PARK HIGH SCHOOL



SCHOOL NAMING: ESTABLISHING A WORK GROUP

8.55 Designation of School Facilities

c. The principal and/or cost center will convene a work group (5-7 individuals) comprised of staff and community members with a vested interest in the school/cost center.

The work group will review and make a recommendation on whether the request should be submitted to the Executive Director for consideration at Cabinet.





ESTABLISHING A NAMING WORK GROUP

1

A CALL FOR INTEREST

Initial email invitation sent
on 10/2/24 to Naming
Committee Meeting.

2

RESPONSE

7 Members:
4 Staff
3 Community members

3

MEETING ON SITE 10/23/24

4

ATTENDANCE

7 members in
attendance:
4 Staff
3 community members

NAMING WORK GROUP MEETING AGENDA:

I. Introductions

II. Review School Designs

III. Review School Board Policy and Process – Designations of School Facilities 8.55

IV. Name Brainstorming

V. School Name Recommendation

VI. Mascot Brainstorming

VII. Next Steps

VIII. Meeting Conclusion & Site Tour



8.55 DESIGNATION OF SCHOOL FACILITIES

SECTION II

II. The name of each newly constructed facility, or existing facility, building, site or common area shall be designated by the School Board. Names will be selected from:

a .The street or road on which the facility is located;

b. The city in which the facility is located;

c. Another geographical location; or,

d. In memory or honor of the extraordinary, distinguished contributions of individuals to humanity, to our county, state, nation or school district; or,

e. In recognition of financial gifts by individuals, families, organizations, foundations or corporations which represent all or a substantial part of the cost of the project. Substantial shall be deemed to mean either a significant majority of the cost (51%) or a contribution which, while not being a significant majority, would not have been available from another source or was in some way integral to the project completion.

f. In the event a school, building etc. is named based on a financial contribution, the district will enter a naming rights agreement with the financial contributor outlining the terms of the agreement.

10/23/24 MEETING HIGHLIGHTS:

SCHOOL NAME

After review of SCSB Policy 8.55, committee ruled-out criteria E, and F.

- Criteria A, B, C, and D were discussed.
- There was a submission from a district employee for the new school to be named after a decorated Navy Commander from the area, Clyde E. Lassen: Clyde E. Lassen High School, Lassen High School at Wellen Park.
- After discussion, the committee expressed their appreciation of Commander Lassen's heroic acts and service, but unanimously voted to name the new school *Wellen Park High School* due to its location.
- The committee agreed there was an opportunity to link the theme of patriotism in the mascot and school colors to honor veterans like Commander Lassen.

10/23/24 MEETING HIGHLIGHTS: SCHOOL MASCOT

Mascot Names Discussed:

- **Eagles**
- **War Eagles**
- **Patriots**

War Eagles was eliminated because “War” in the name was not desired.

Patriots was eliminated because it is the current mascot of Heron Creek Middle School.

Eagles was the preferred option because it is patriotic, and leaves room for design, and development of a proud mascot.



10/23/24 MEETING OUTCOME



A motion was made and seconded to call the school

Wellen Park High School

Mascot: Eagles

The motion passed unanimously

10/28/24 CABINET MEETING

**Cabinet Reviewed the
Naming Committee
Recommendations**

Voted on the Color Scheme

Color Scheme



#3D428B

#E62020

#FFFFFF





Thank you



November 6, 2024 Board Meeting
Agenda Item 3.

Title

K-8 BOUNDARY ADVISORY COMMITTEE RECOMMENDATIONS

Contact

KEMP

ATTACHMENTS:

Description	Upload Date	Type
Skye Ranch Boundary Recommendations	11/11/2024	Cover Memo



Boundary Advisory Committee

SKYE RANCH BOUNDARY RECOMMENDATION

November 6, 2024





SKYE RANCH SCHOOL K-8

Redistricting Scenarios and Recommendations







HARVARD • JOLLY



HARVARD • JOLLY

Skye Ranch School

- Construction Update/Progress
- Ms. Jamie Hannon, Principal appointed May 2024
- School Name and Mascot, Board approved September 3, 2024



District Team

Dr. Michael Kemp

Chief Operations Officer

Dr. Brandon Johnson

Chief of Middle Schools

Ms. Jennifer Mainelli

Chief of Elementary Schools

Mr. Jody Dumas

Executive Director, Facilities

Ms. Diane Cominotti

Director of Planning

Dr. Denise Cantalupo

Executive Director, Accountability & Choice

Ms. Millie Wheeler

Supervisor, School Choice & Charter Schools

Ms. Charlotte Price

Assistant Director, Transportation

Ms. Sara Dan

Director, Food & Nutrition

Mr. Craig Maniglia

Director, Communications

Ms. Amy Anderson

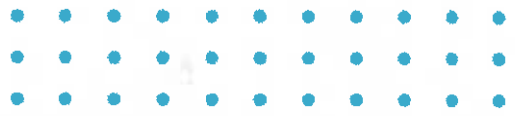
Planning Analyst

Mr. Chris Joseph

GIS Planning Technician

Ms. Micki Ryan

Planning Consultant





Boundary Advisory Committee (B.A.C.) Members



Ashton Elementary

Kristi Jarvis
Principal

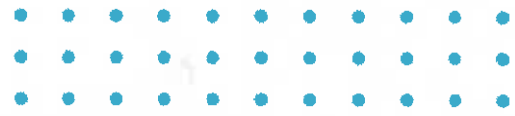
Christine Herrington
SAC Chair/Teacher Rep.

Katherine Patti
Parent Rep.

Taylor Mock
Parent Rep.

Glenn Scharf
Parent Rep.

Ali McCarthy
Parent Rep.



Lakeview Elementary

Michelle Giddens
Principal

Mavis Seger
SAC Chair/Teacher Rep.

Lindsay D'Agostino
Parent Rep.

Sophie O'Leary
Parent Rep.

Kevin Robbins
Parent Rep.

Michael Richards
Parent Rep.

Sarasota Middle

Jennifer Nzeza
Principal

Dr. Brooks Tracey
SAC Chair/Teacher Rep.

Pia Rex
Parent Rep.

Gina Rogers
Parent Rep.

Cinzia Iannicello Anderson
Parent Rep.

Marikate Tippy
Parent Rep.

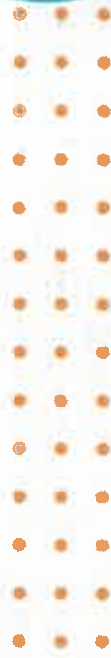


Boundary Advisory Committee (B.A.C.) Purpose



School Board Policy 5.20 establishes the School Board's expectations when it becomes necessary to reorganize School District attendance boundary lines.

The policy establishes the formation of a Boundary Advisory Committee to assist in the development of the proposed changes.





Boundary Advisory Committee (B.A.C.) Purpose



Pursuant to School Board Policy 5.2, the following guidelines will be used whenever possible:

- Attendance areas will be designed to incorporate entire neighborhoods, keeping neighboring children together and contributing to an efficient, effective and economic transportation configuration.
- Redistricting shall strive to assure school are left with a capacity that allows for growth from new neighborhoods.
- Every attempt will be made to not require the moving of students who moved due to a prior redistricting.
- When attendance boundaries are changed, elementary and secondary students with one year remaining in their present school will have the option of remaining.





Publicly Advertised Meetings



- **April 24, 2024 (B.A.C. Meeting)**
- **May 22, 2024 (B.A.C. Meeting)**
- **October 2, 2024 (B.A.C Meeting)**
- **November 6, 2024 – Board Workshop**
- **November 19, 2024 – Public Hearing**
- **November 19, 2024 – Board Action**



* Agenda and Minutes for each public meeting are posted via SCS website.

* Public input/ comments/ questions have remained open via SCS website since the inception of B.A.C. for Skye Ranch School.

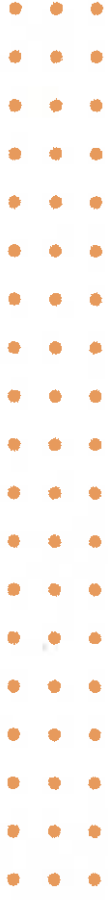




REDISTRICITING:

Guidelines, Methodology, and Process

Boundary Development, Considerations, & Feasibility



- i. **Relieve overcapacity** schools
(Ashton, Lakeview, Sarasota Middle)
- ii. **Meet Level of Service (LOS)** requirements to open Skye Ranch School
- iii. **GIS/SIS** – platforms used to drive feasibility with boundary scenarios



Methodology

- **Use Natural Boundaries**
(Bridges, Waterways, Major Thoroughfares/Roadways)
- **Current Capacity and Utilization Within the Study Area Impacted**
(LOS-Level of Service)
- **Address Growth**
(Current and Projected Planned Development)
- **Portable Reduction Act**
(Impacts LOS; Address Safety-Age/Security-Hardening)
- **Geographic Proximity**



Methodology

- **Transportation Efficiency/Logistics**
(Impacts on Routing, Costs, Etc.)
- **Safety Considerations**
(Hazardous Walking Conditions Within a Two-Mile Radius, Etc.)
- **Avoid Division of Students Within the Same Neighborhood/Street**
- **Avoid Multiple Moves**
(Moving Impacted Students in a Study Area Twice)
- **Programmatic Equity**
(Pre-K and Specialized Program Opportunities for All Elem. Schools)





Boundary Development, Considerations, and Feasibility



Primary Planning Variables

Grounded in Florida Statutes, State Requirements for Educational Facilities (SREF) and Board Policy

i. Current Capacity Utilization Within the Study Area Impacted

- Florida Statute 163.3180(6)(a) Concurrency
- School Board Policy 7.78 - Adequacy of Educational Facilities and Growth Management

ii. Address Growth

- Florida Statute 163.3180(6)(a) Concurrency
- School Board Policy 7.78 - Adequacy of Educational Facilities and Growth Management





Boundary Development, Considerations, and Feasibility



iii. Portable Reduction Plan

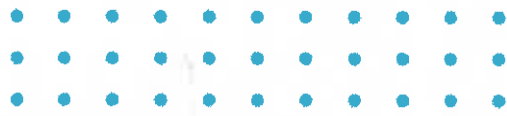
1. Florida Statute 1013.21
2. School District Capital Improvement Plan Annual Portable Utilization Report

iv. Transportation

1. Florida Statute 1006.21 - Transportation
2. School Board Policy 8.32 - Bus Routes

v. Safety Considerations

1. Florida Statute 1006.23 - Hazardous Walking Conditions
2. School Board Policy 8.31 - Student Transportation





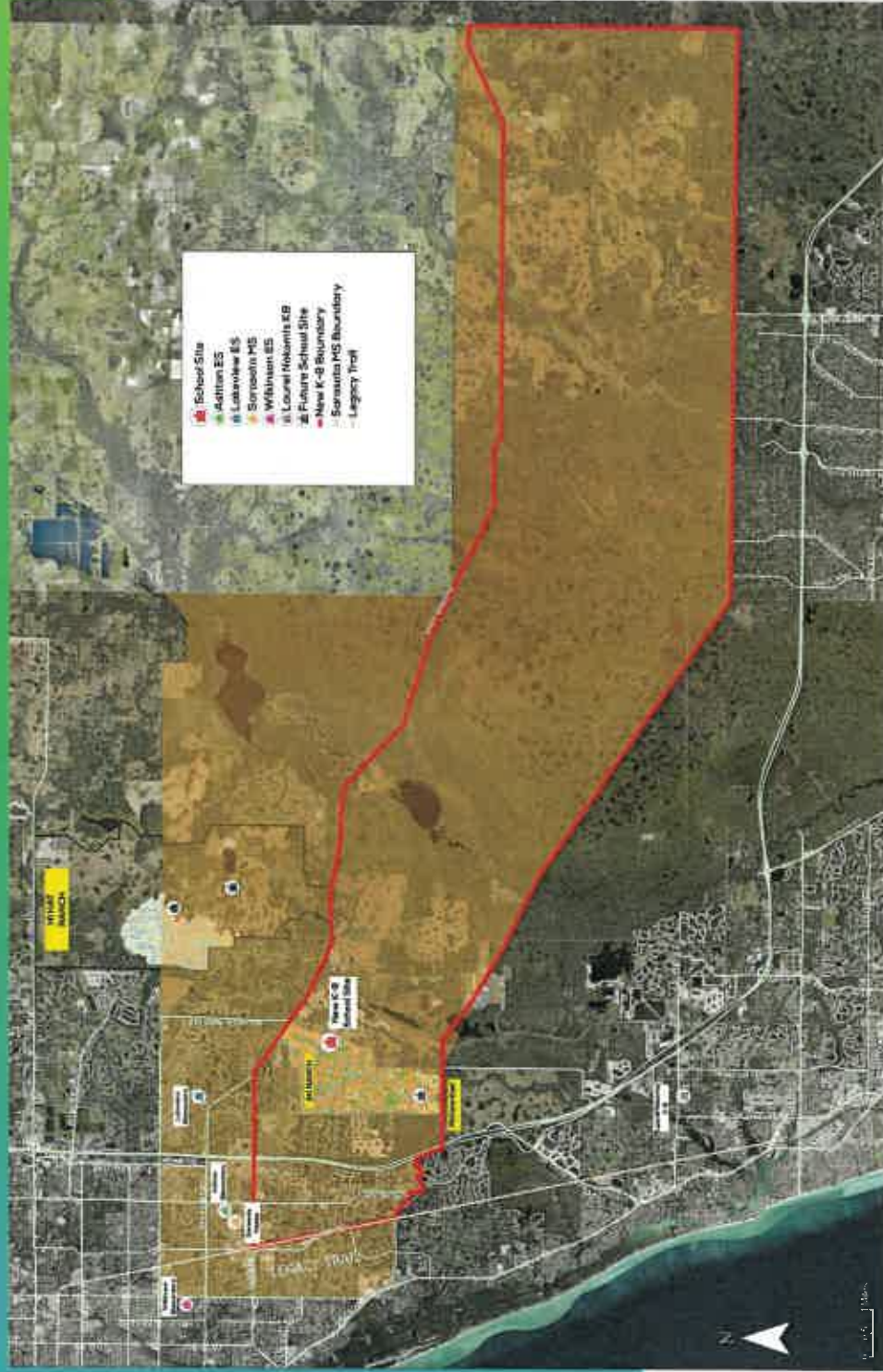
FEASIBLE SCENARIO DEVELOPMENT

(3 presented to B.A.C)

SCENARIO #1 - Elementary



SCENARIO #1 - Middle



SCENARIO #1

SCHOOL	Permanent FISH Capacity	Current # of Portables	2024-2025 10-Day Count of Resident Students	% of Resident Student Utilization	Students Remaining After Rebalance	Total Students Rebalanced	Projected % Utilization	Projected # of Portables
Ashton Elementary	734	36	1,018	139%	667	414	91%	0
Lakeview Elementary	594	15	994	167%	669	324	113%	4
Sarasota Middle School	1,406	8	1,522	108%	1,073	449	76%	0
Skye Ranch K-8 School	1,382	-	-	-	-	1,187	86%	0

Transportation Costs and Ride Times:

	Current	Projected	Difference
Cost	\$476,680.50	\$493,951.50	\$17,271.00
Average Ride Time	23 minutes	25 minutes	+2 minutes



SCENARIO #2 - Elementary



SCENARIO #2 - Middle



- School Site
- Aurora ES
- Lakewood ES
- Sarasota MS
- Wilkinson ES
- Laurel Nekema K8
- Future School Site
- New K-8 Boundary
- Sarasota HS Boundary
- Legacy Trail

SCENARIO #2

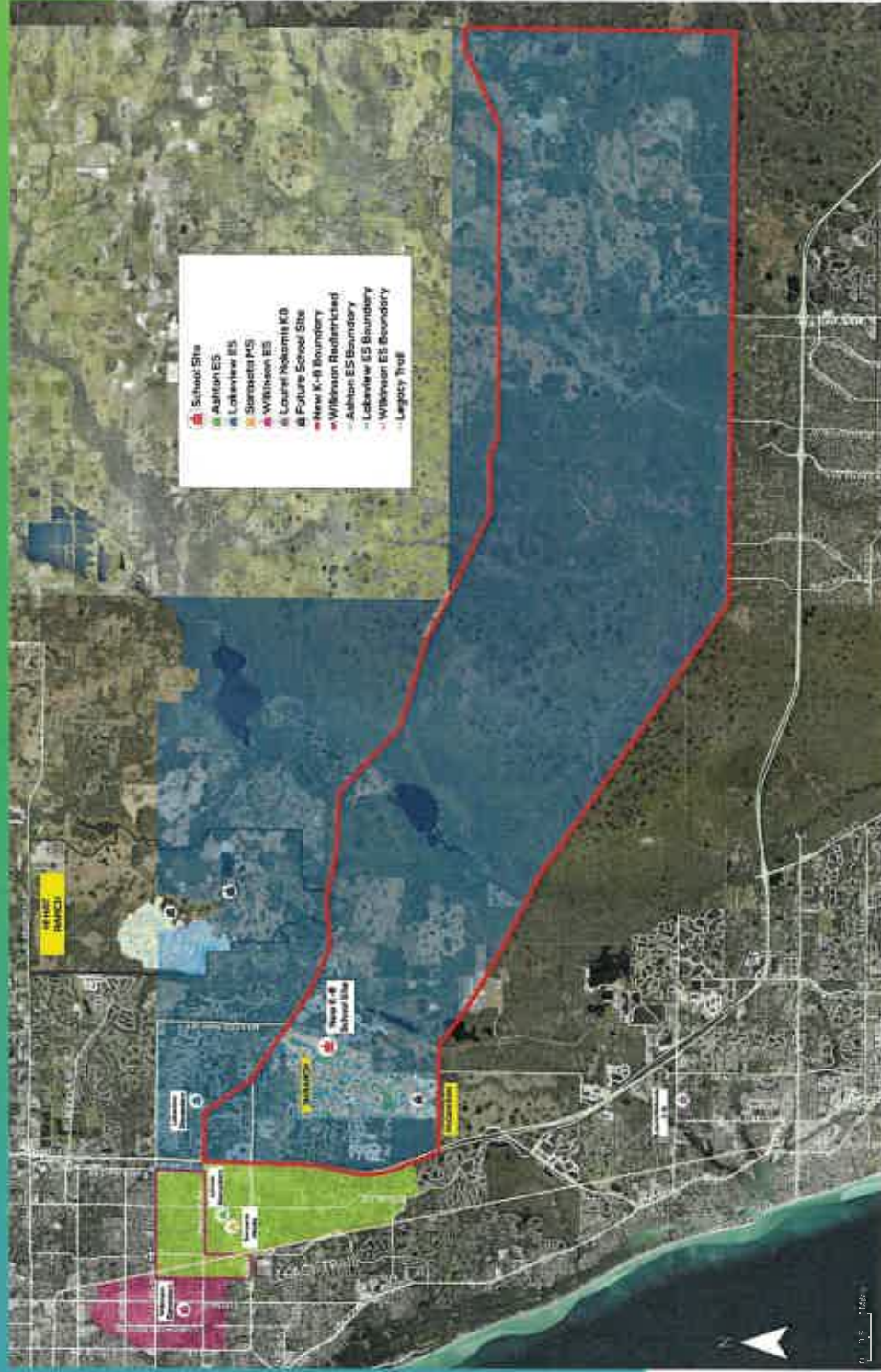
SCHOOL	Permanent FISH Capacity	Current # of Portables	2024-2025 10-Day Count of Resident Students	% of Resident Student Utilization	Students Remaining After Rebalance	Total Students Rebalanced	Projected % Utilization	Projected # of Portables
Ashton Elementary	734	36	1,018	139%	855	226	116%	7
Lakeview Elementary	594	15	994	167%	669	324	113%	4
Sarasota Middle School	1,406	8	1,522	108%	1,343	179	96%	0
Skye Ranch K-8 School	1,382	-	-	-	-	729	53%	0

Transportation Costs and Ride Times:

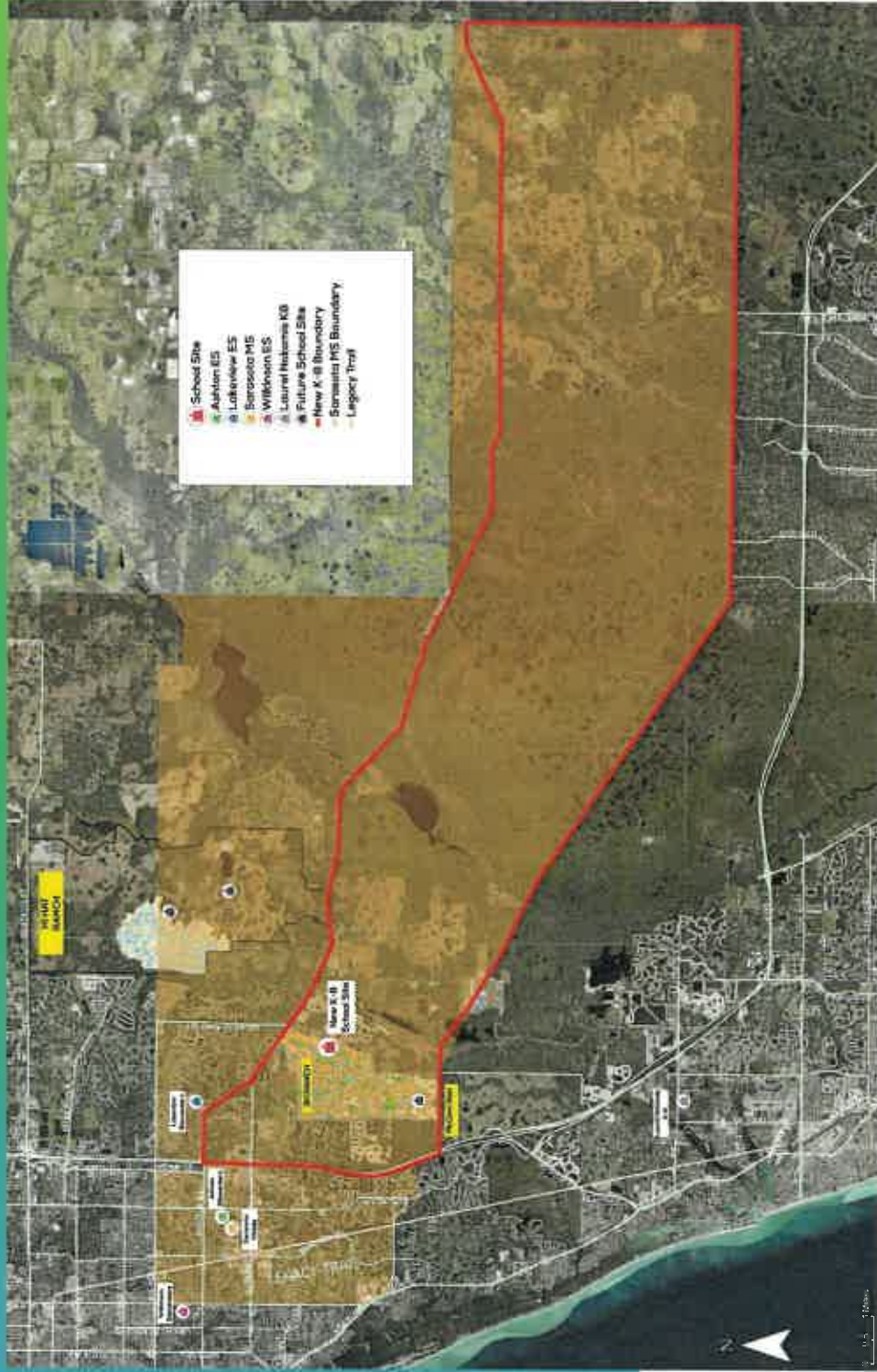
	Current	Projected	Difference
Cost	\$476,680.50	\$493,951.50	\$17,271.00
Average Ride Time	23 minutes	25 minutes	+2 minutes



SCENARIO #3 - Elementary



SCENARIO #3 - Middle



SCENARIO #3

SCHOOL	Permanent FISH Capacity	Current # of Portables	2024-2025 10-Day Count of Resident Students	% of Resident Student Utilization	Students Remaining After Rebalance	Total Students Rebalanced	Projected % Utilization	Projected # of Portables
Ashton Elementary	734	36	1,018	139%	769	323*	105%	2
Lakeview Elementary	594	15	994	167%	575	419	97%	0
Wilkinson Elementary	786	0	668	85%	991	0	126%	11
Sarasota Middle School	1,406	8	1,522	108%	1275	247	91%	0
Skye Ranch K-8 School	1,382	-	-	-	666	666	48%	0

*Students rebalanced from Ashton to Wilkinson

Transportation Costs and Ride Times:

	Current	Projected	Difference
Cost	\$565,805.50	\$565,812.90	\$7,077.40
Average Ride Time	24 minutes	26 minutes	+2 minutes





ADDITIONAL SCENARIOS ANALYZED

Per B.A.C. Member Request



Suggested Scenario Analysis and Feasibility

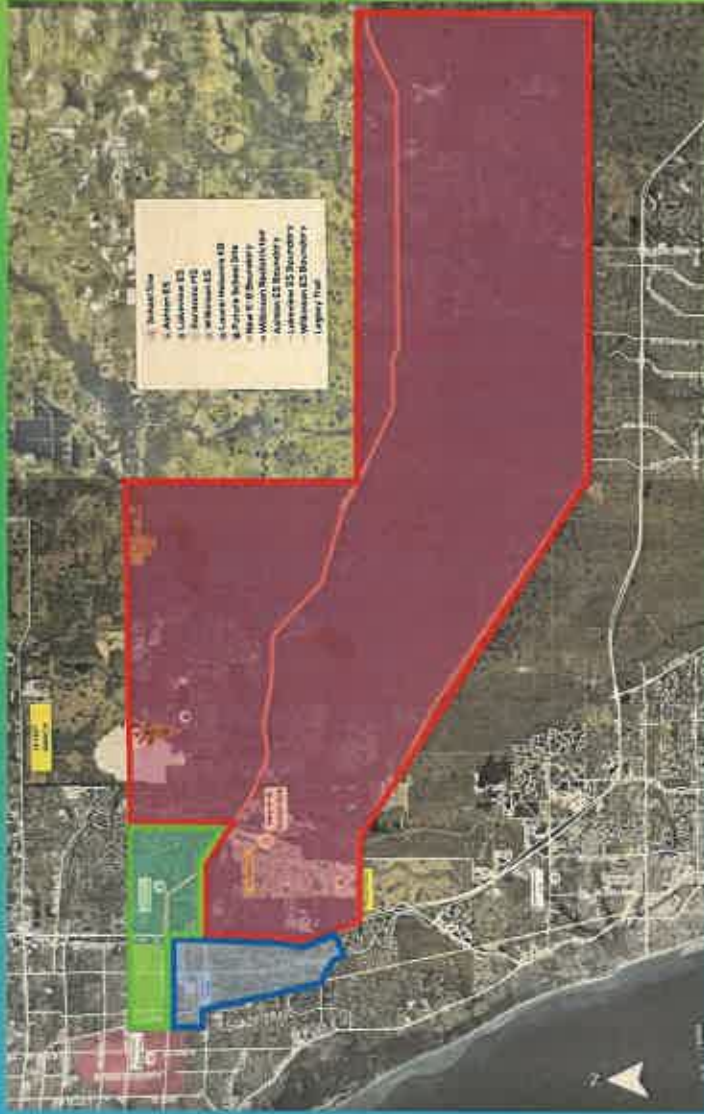


1. Four additional boundary scenarios were analyzed, and each were determined to be “not feasible” due to one, some or all the following justifications:
 - i. Boundary does not reduce the capacity at impacted schools.
 - ii. Boundary does not generate an acceptable level of service to open Skye Ranch.
 - iii. Boundary does not effectively satisfy primary planning variables.
 - iv. Boundary does not effectively satisfy operational variables.
 - v. Boundary does not align with best practice.

2. The data associated with additional scenarios was presented and shared publicly with the B.A.C.



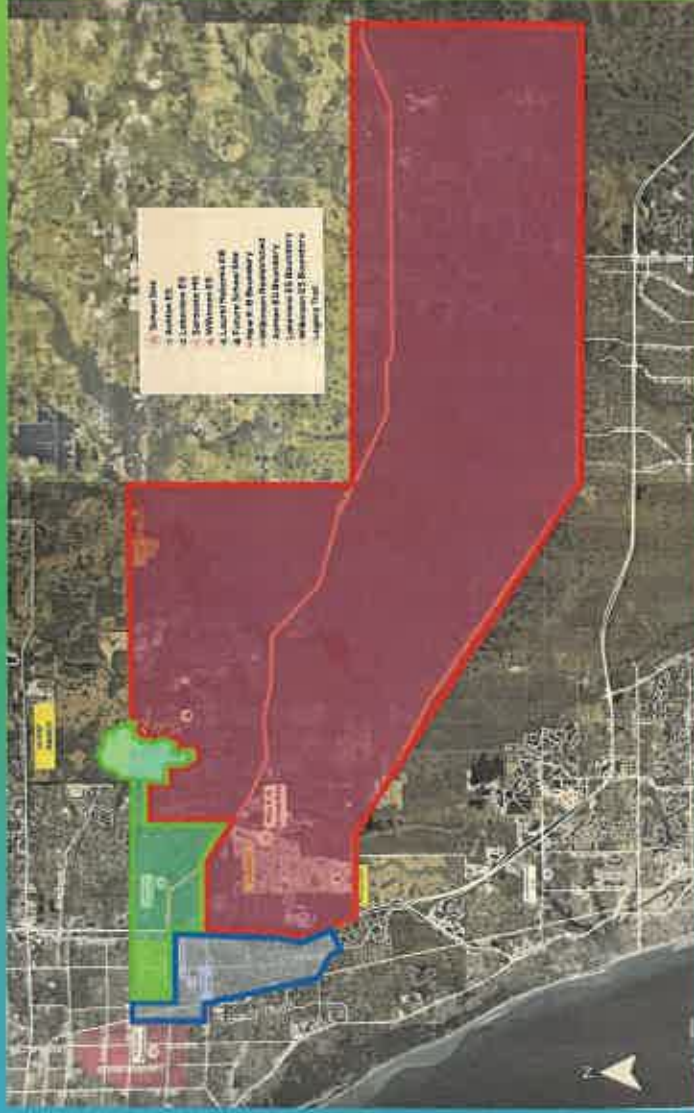
ADDITIONAL SCENARIO #3.1



Results in only 549 students to new K-8 (40% Capacity) while leaving Ashton and Lakeview overcapacity.

NOT FEASIBLE!

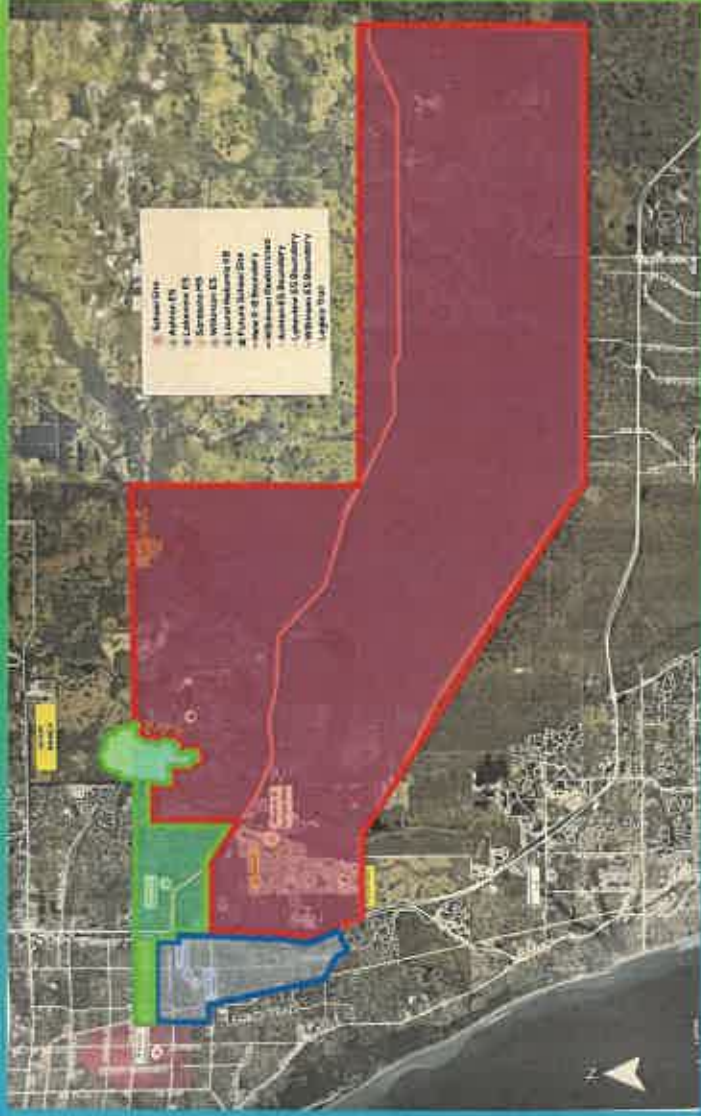
ADDITIONAL SCENARIO #3.2



Results in only 648 students to new K-8 (47% Capacity) while leaving Ashton and Lakeview overcapacity.

NOT FEASIBLE!

ADDITIONAL SCENARIO #3.3

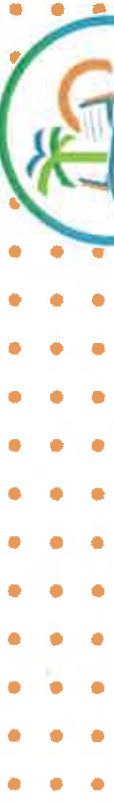


Results in only 583 students to new K-8 (42% Capacity) while leaving Ashton and Lakeview overcapacity.

NOT FEASIBLE!



ADDITIONAL SCENARIO #3.4



Results in only 522 students to new K-8 (38% Capacity) while leaving Ashton and Lakeview overcapacity.

NOT FEASIBLE!





B.A.C. ANALYSIS, SCORING, AND FINAL RANKING OF FEASIBLE SCENARIOS

The Process

- The B.A.C. Teams scored and ranked all feasible scenarios by utilizing a numeric scoring rubric that assessed whether the scenario meets or did not meet the primary, operational, and best practice variables. (Yes = 1, No = 0)
- The B.A.C. Teams produced a total score for each feasible scenario to yield a 1, 2, 3 ranking for Board consideration.
- In the event of a tie between scenarios, the B.A.C. Team review the detailed data associated with each scenario and pursued team consensus as to which scenario best met the primary, operational, and best practice variables to produce a final ranking for Board consideration.
- The results and final rankings of each B.A.C. Team was shared publicly.
- The result of each B.A.C. Team was then combined to determine a B.A.C. overall ranking of the feasible scenarios for the Board's consideration.



Skye Ranch School Scorecard Protocol

TEAM ACTIVITY

YES = 1

NO = 0

OBJECTIVE

Keeps Neighborhoods Intact

Reduces Overcapacity At Ashton

Reduces Overcapacity At Lakeview

Allows For Growth At Sarasota Middle School

Meets Population Number For K-8, 800 Elementary, 500 Middle

Does Not Require A Second Redistricting

Minimal Impact On Student Ride Times

Minimizes Hazardous Walking Conditions

Minimizes Impact on Transportation

Fits Into Overall Growth Plan for School District and New Schools Planned For Future

Supports The District's Portable Reduction Plan

Aligns With Strategic Plan Goal Of Pre-K and Specialized Programs at ALL Elementary Schools

SCORING DIRECTIONS: (30 mins)

1. Score each objective (Yes=1, No=0)
2. Produce score for each scenario
3. In the event of a numeric tie with scenarios, compare variables such as: utilization rates, transportation costs, etc. to create the team's final ranking.
4. Results for each team will be used to provide a final ranking of the three scenarios to be presented as the BAC's recommendation to the Board.

Questions about a variable?

District Facilitator Available





TEAM 1 - SCORING

Sarasota Middle School

TEAM 1 – Scenario 1 Scorecard

OBJECTIVE	YES = 1	NO = 0
Keeps Neighborhoods Intact	1	
Reduces Overcapacity At Ashton	1	
Reduces Overcapacity At Lakeview	1	
Allows For Growth At Sarasota Middle School	1	
Meets Population Number For K-8, 800 Elementary, 500 Middle	1	
Does Not Require A Second Redistricting	1	
Minimal Impact On Student Ride Times	1	
Minimizes Hazardous Walking Conditions	1	
Minimizes Impact on Transportation	1	
Fits Into Overall Growth Plan for School District and New Schools Planned For Future	1	
Supports The District's Portable Reduction Plan	1	
Aligns With Strategic Plan Goal Of Pre-K and Specialized Programs at ALL Elementary Schools	1	
TEAM 1 – SCENARIO 1 SCORE	12	

SCHOOL	Perm. FISH Capacity	Current # of Portables	24-25 10-Day Count Resident Students	% of Resident Student Utilization	Students Remaining After Rebalance	Total Students Rebalanced	Projected % Utilization	Projected # Portables
Ashton Elementary	734	36	1,018	139%	667	414	91%	0
Lakeview Elementary	594	15	994	167%	669	324	113%	4
Sarasota Middle School	1,406	8	1,522	108%	1,073	449	76%	0
Skye Ranch K-8 School	1,382	-	-	-	-	1,187	86%	0

Transportation Costs and Ride Times:

	Current	Projected	Difference
Cost	\$476,680.50	\$493,951.50	\$17,271.00
Average Ride Time	23 minutes	25 minutes	+2 minutes



TEAM 1 – Scenario 2 Scorecard

OBJECTIVE	YES = 1 NO = 0
<i>Keeps Neighborhoods Intact</i>	1
<i>Reduces Overcapacity At Ashton</i>	1
<i>Reduces Overcapacity At Lakeview</i>	1
<i>Allows For Growth At Sarasota Middle School</i>	1
<i>Meets Population Number For K-8, 800 Elementary, 500 Middle</i>	1
<i>Does Not Require A Second Redistricting</i>	1
<i>Minimal Impact On Student Ride Times</i>	1
<i>Minimizes Hazardous Walking Conditions</i>	1
<i>Minimizes Impact on Transportation</i>	1
<i>Fits Into Overall Growth Plan for School District and New Schools Planned For Future</i>	1
<i>Supports The District's Portable Reduction Plan</i>	1
<i>Aligns With Strategic Plan Goal Of Pre-K and Specialized Programs at ALL Elementary Schools</i>	1
TEAM 1 – SCENARIO 2 SCORE	12

SCHOOL	Perm. FISH Capacity	Current # of Portables	24-25 10- Day Count Resident Students	% of Resident Student Utilization	Students Remaining After Rebalance	Total Students Rebalanced	Projected % Utilization	Projected # Portables
Ashton Elementary	734	36	1,018	139%	855	226	116%	7
Lakeview Elementary	594	15	994	167%	669	324	113%	4
Sarasota Middle School	1,406	8	1,522	108%	1,343	179	96%	0
Skye Ranch K-8 School	1,382	-	-	-	-	729	53%	0

Transportation Costs and Ride Times:

	Current	Projected	Difference
Cost	\$476,680.50	\$493,951.50	\$17,271.00
Average Ride Time	23 minutes	25 minutes	+2 minutes



TEAM 1 – Scenario 3 Scorecard

OBJECTIVE	YES = 1 NO = 0	
	Keeps Neighborhoods Intact	1
Reduces Overcapacity At Ashton	1	
Reduces Overcapacity At Lakeview	1	
Allows For Growth At Sarasota Middle School	1	
Meets Population Number For K-8, 800 Elementary, 500 Middle	0	
Does Not Require A Second Redistricting	1	
Minimal Impact On Student Ride Times	1	
Minimizes Hazardous Walking Conditions	0	
Minimizes Impact on Transportation	1	
Fits Into Overall Growth Plan for School District and New Schools Planned For Future	0	
Supports The District's Portable Reduction Plan	0	
Aligns With Strategic Plan Goal Of Pre-K and Specialized Programs at ALL Elementary Schools	1	
TEAM 1 – SCENARIO 3 SCORE	8	

SCHOOL	Perm. FISH Capacity	Current # of Portables	24-25 10-Day Count Resident Students	% of Resident Student Utilization	Students Remaining After Rebalance	Total Students Rebalanced	Projected % Utilization	Projected # Portables
Ashton Elementary	734	36	1,018	139%	769	323*	105%	2
Lakeview Elementary	594	15	994	167%	575	419	97%	0
Wilkinson Elementary	786	0	668	85%	991	0	126%	11
Sarasota Middle School	1,406	8	1,522	108%	1275	247	91%	0
Skye Ranch School K-8	1,382	-	-	-	666	666	48%	0%

*Students rebalanced from Ashton to Wilkinson.

Transportation Costs and Ride Times:

	Current	Projected	Difference
Cost	\$565,805.50	\$565,812.90	\$7,077.40
Average Ride Time	24 minutes	26 minutes	+2 minutes



Team 1 Final Ranking

Team 1 – Sarasota Middle School RANK

Scenario 1

1

Scenario 2

2

Scenario 3

3





TEAM 2 - Scoring

Lakeview Elementary School



TEAM 2 – Scenario 1 Scorecard

OBJECTIVE	YES = 1
	NO = 0
Keeps Neighborhoods Intact	1
Reduces Overcapacity At Ashton	1
Reduces Overcapacity At Lakeview	1
Allows For Growth At Sarasota Middle School	1
Meets Population Number For K-8, 800 Elementary, 500 Middle	0
Does Not Require A Second Redistricting	0
Minimal Impact On Student Ride Times	1
Minimizes Hazardous Walking Conditions	0
Minimizes Impact on Transportation	1
Fits Into Overall Growth Plan for School District and New Schools Planned For Future	1
Supports The District's Portable Reduction Plan	1
Aligns With Strategic Plan Goal Of Pre-K and Specialized Programs at ALL Elementary Schools	1
TEAM 2 – SCENARIO 1 SCORE	9

SCHOOL	Perm. FISH Capacity	Current # of Portables	24-25 10-Day Count Resident Students	% of Resident Student Utilization	Students Remaining After Rebalance	Total Students Rebalanced	Projected % Utilization	Projected # Portables
Ashton Elementary	734	36	1,018	139%	667	414	91%	0
Lakeview Elementary	594	15	994	167%	669	324	113%	4
Sarasota Middle School	1,406	8	1,522	108%	1,073	449	76%	0
Skye Ranch K-8 School	1,382	-	-	-	-	1,187	86%	0

Transportation Costs and Ride Times:

	Current	Projected	Difference
Cost	\$476,680.50	\$493,951.50	\$17,271.00
Average Ride Time	23 minutes	25 minutes	+2 minutes



TEAM 2 – Scenario 2 Scorecard

OBJECTIVE	YES = 1 NO = 0
Keeps Neighborhoods Intact	1
Reduces Overcapacity At Ashton	1
Reduces Overcapacity At Lakeview	1
Allows For Growth At Sarasota Middle School	0
Meets Population Number For K-8, 800 Elementary, 500 Middle	0
Does Not Require A Second Redistricting	1
Minimal Impact On Student Ride Times	1
Minimizes Hazardous Walking Conditions	0
Minimizes Impact on Transportation	1
Fits Into Overall Growth Plan for School District and New Schools Planned For Future	1
Supports The District's Portable Reduction Plan	1
Aligns With Strategic Plan Goal Of Pre-K and Specialized Programs at ALL Elementary Schools	1
TEAM 2 – SCENARIO 2 SCORE	9

SCHOOL	Perm. FISH Capacity	Current # of Portables	24-25 10- Day Count Resident Students	% of Resident Student Utilization	Students Remaining After Rebalance	Total Students Rebalanced	Projected % Utilization	Projected # Portables
Ashton Elementary	734	36	1,018	139%	855	226	116%	7
Lakeview Elementary	594	15	994	167%	669	324	113%	4
Sarasota Middle School	1,406	8	1,522	108%	1,343	179	96%	0
Skye Ranch K-8 School	1,382	-	-	-	-	729	53%	0

Transportation Costs and Ride Times:

	Current	Projected	Difference
Cost	\$476,680.50	\$493,951.50	\$17,271.00
Average Ride Time	23 minutes	25 minutes	+2 minutes



TEAM 2 – Scenario 3 Scorecard

OBJECTIVE	YES = 1 NO = 0
Keeps Neighborhoods Intact	0
Reduces Overcapacity At Ashton	1
Reduces Overcapacity At Lakeview	1
Allows For Growth At Sarasota Middle School	1
Meets Population Number For K-8, 800 Elementary, 500 Middle	0
Does Not Require A Second Redistricting	1
Minimal Impact On Student Ride Times	1
Minimizes Hazardous Walking Conditions	0
Minimizes Impact on Transportation	1
Fits Into Overall Growth Plan for School District and New Schools Planned For Future	0
Supports The District's Portable Reduction Plan	0
Aligns With Strategic Plan Goal Of Pre-K and Specialized Programs at ALL Elementary Schools	0
TEAM 2 – SCENARIO 3 SCORE	6

SCHOOL	Perm. FISH Capacity	Current # of Portables	24-25 10-Day Count Resident Students	% of Resident Student Utilization	Students Remaining After Rebalance	Total Students Rebalanced	Projected % Utilization	Projected # Portables
Ashton Elementary	734	36	1,018	139%	769	323*	105%	2
Lakeview Elementary	594	15	994	167%	575	419	97%	0
Wilkinson Elementary	786	0	668	85%	991	0	126%	11
Sarasota Middle School	1,406	8	1,522	108%	1275	247	91%	0
Skye Ranch School K-8	1,382	-	-	-	666	666	48%	0%

*Students rebalanced from Ashton to Wilkinson.

Transportation Costs and Ride Times:

	Current	Projected	Difference
Cost	\$565,805.50	\$565,812.90	\$7,077.40
Average Ride Time	24 minutes	26 minutes	+2 minutes



Team 2 Final Ranking

Team 2 – Lakeview Elementary

RANK

Scenario 1

1

Scenario 2

2

Scenario 3

3





TEAM 3 - SCORING

Ashton Elementary School



TEAM 3 – Scenario 1 Scorecard

OBJECTIVE
 YES = 1
 NO = 0

Keeps Neighborhoods Intact	1
Reduces Overcapacity At Ashton	1
Reduces Overcapacity At Lakeview	0
Allows For Growth At Sarasota Middle School	1
Meets Population Number For K-8, 800 Elementary, 500 Middle	1
Does Not Require A Second Redistricting	0
Minimal Impact On Student Ride Times	1
Minimizes Hazardous Walking Conditions	1
Minimizes Impact on Transportation	1
Fits Into Overall Growth Plan for School District and New Schools Planned For Future	0
Supports The District's Portable Reduction Plan	1
Aligns With Strategic Plan Goal Of Pre-K and Specialized Programs at ALL Elementary Schools	1
TEAM 3 – SCENARIO 1 SCORE	9

SCHOOL	Perm. FISH Capacity	Current # of Portables	24-25 10-Day Count Resident Students	% of Resident Student Utilization	Students Remaining After Rebalance	Total Students Rebalanced	Projected % Utilization	Projected # Portables
Ashton Elementary	734	36	1,018	139%	667	414	91%	0
Lakeview Elementary	594	15	994	167%	669	324	113%	4
Sarasota Middle School	1,406	8	1,522	108%	1,073	449	76%	0
Skye Ranch K-8 School	1,382	-	-	-	-	1,187	86%	0

Transportation Costs and Ride Times:

	Current	Projected	Difference
Cost	\$476,680.50	\$493,951.50	\$17,271.00
Average Ride Time	23 minutes	25 minutes	+2 minutes



TEAM 3 - Scenario 2 Scorecard

OBJECTIVE	YES = 1	NO = 0
Keeps Neighborhoods Intact	1	
Reduces Overcapacity At Ashton	1	
Reduces Overcapacity At Lakeview	1	
Allows For Growth At Sarasota Middle School	0	
Meets Population Number For K-8, 800 Elementary, 500 Middle	1	
Does Not Require A Second Redistricting	0	
Minimal Impact On Student Ride Times	1	
Minimizes Hazardous Walking Conditions	1	
Minimizes Impact on Transportation	1	
Fits Into Overall Growth Plan for School District and New Schools Planned For Future	1	
Supports The District's Portable Reduction Plan	1	
Aligns With Strategic Plan Goal Of Pre-K and Specialized Programs at ALL Elementary Schools	1	
TEAM 3 – SCENARIO 2 SCORE	10	

SCHOOL	Perm. FISH Capacity	Current # of Portables	24-25 10- Day Count Resident Students	% of Resident Student Utilization	Students Remaining After Rebalance	Total Students Rebalanced	Projected % Utilization	Projected # Portables
Ashton Elementary	734	36	1,018	139%	855	226	116%	0
Lakeview Elementary	594	15	994	167%	669	324	113%	4
Sarasota Middle School	1,406	8	1,522	108%	1,343	179	96%	0
Skye Ranch K-8 School	1,382	-	-	-	-	729	53%	0

Transportation Costs and Ride Times:

	Current	Projected	Difference
Cost	\$476,680.50	\$493,951.50	\$17,271.00
Average Ride Time	23 minutes	25 minutes	+2 minutes



TEAM 3 - Scenario 3 Scorecard

YES = 1
NO = 0

OBJECTIVE

Keeps Neighborhoods Intact	1
Reduces Overcapacity At Ashton	0
Reduces Overcapacity At Lakeview	1
Allows For Growth At Sarasota Middle School	1
Meets Population Number For K-8, 800 Elementary, 500 Middle	0
Does Not Require A Second Redistricting	0
Minimal Impact On Student Ride Times	1
Minimizes Hazardous Walking Conditions	1
Minimizes Impact on Transportation	1
Fits Into Overall Growth Plan for School District and New Schools Planned For Future	1
Supports The District's Portable Reduction Plan	1
Aligns With Strategic Plan Goal Of Pre-K and Specialized Programs at ALL Elementary Schools	1
TEAM 3 – SCENARIO 3 SCORE	9

SCHOOL	Perm. FISH Capacity	Current # of Portables	24-25 10-Day Count Resident Students	% of Resident Student Utilization	Students Remaining After Rebalance	Total Students Rebalanced	Projected % Utilization	Projected # Portables
Ashton Elementary	734	36	1,018	139%	769	323*	105%	2
Lakeview Elementary	594	15	994	167%	575	419	97%	0
Wilkinson Elementary	786	0	668	85%	991	0	126%	11
Sarasota Middle School	1,406	8	1,522	108%	1275	247	91%	0
Skye Ranch School K-8	1,382	-	-	-	666	666	48%	0%

*Students rebalanced from Ashton to Wilkinson.

Transportation Costs and Ride Times:

	Current	Projected	Difference
Cost	\$565,805.50	\$565,812.90	\$7,077.40
Average Ride Time	24 minutes	26 minutes	+2 minutes



Team 3 Final Ranking

Team 3 – Ashton Elementary

RANK

Scenario 1

3

Scenario 2

1

Scenario 3

2



The Collective Result & Recommendation

2 of the 3 B.A.C. Teams ranked Scenario 1 as the top ranked scenario satisfying the most primary, operational, and best practice variable considered to best meet the redistricting effort for Skye Ranch School K-8.

RECOMMENDATION: The District team’s professional recommendation to the Superintendent is to adopt Scenario 1 as it:

1. Best meets the primary and operational variables aligning with redistricting best practices.
2. Honors the collaborative result established by the Boundary Advisory Committee.





GUIDELINES FOR CHOICE





Will redistricted **ELEMENTARY** school students be allowed to remain at their school?



This depends on the following:

1. Skye Ranch School will open with grades K-6 in 2025-26.
2. Skye Ranch School will expand to 7th grade in 2026-27.
3. Skye Ranch School will expand to 8th grade in 2027-28.
4. Rising 4th graders will have the option to remain at their current site for their final year. This is in alignment of School Board Policy 5.20. C5.
 - a. When attendance boundaries are changed, elementary and secondary students with one (1) year remaining in their present school will have the option of remaining at that school. This shall not automatically entitle the student to district transportation. When considering attendance boundary adjustments, the Board by its own discretion may extend the option to other students with more than one (1) year remaining.





REMINDERS

- This is a K-5 to K-8, not a K-5 to K-5 redistrict effort.
- While Board policy does allow for 4th graders to remain, parents should weigh the pros and cons associated with a delay in transitioning with the inaugural peer cohort to Skye Ranch in which they will remain together for 4 years (grade 5 – 8).





Guidelines for Choice



Will redistricted MIDDLE school students be allowed to remain at their school?

- **YES.** 7th and 8th graders in the new attendance zone for 2025-26 will NOT be impacted.
- Phasing in additional grades will require them to remain at Sarasota Middle School.



If my student is a current Choice student, can he/she remain at their currently assigned school as a Choice student?

- Yes, as defined by Florida Statute 1002.31, all current students on traditional Choice (COE) at Ashton, Lakeview, or Sarasota Middle may remain at the chosen school by the parent until the student completes the highest grade level at that school.

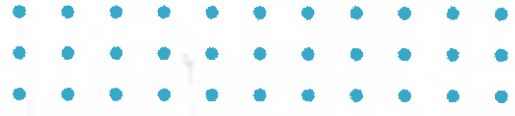




Guidelines for Choice



If my student is a current Reassignment student, can he/she remain at their currently assigned school as a Reassigned student?



- Per SCS procedures, all current students on reassignment at Ashton, Lakeview, or Sarasota Middle may remain at the chosen school by the parent until the student completes the highest grade level at that school.

If I am rezoned, can I apply for Choice to remain at my current school?

- If the adjusted enrollment after rebalancing is less than 90% capacity, Choice and Reassignments will be evaluated in accordance with current policies/procedures.





Guidelines for Choice



If my child is remaining at the current school (ex. 5th grader), will a younger sibling be permitted to attend?

- This depends. The younger sibling(s) can apply for Choice/Reassignment and may be placed in accordance with current policies/procedures.





FREQUENTLY ASKED QUESTIONS





Frequently Asked Questions



Why is the school not opening with all grades, Kindergarten through Eighth Grade (K-8)?

Skye Ranch School opens August 2025 with Kindergarten through Sixth Grade. SCS District Staff visited other counties who recently opened a K-8 configuration to capitalize on implementation lessons learned. The team learned districts recommended a phased-in transition was more conducive to successfully open K-8 Schools at the lower grade levels and phasing students into the upper grades.



What is the student data based on, and does it include Sarasota Middle School students that will not be able to attend Skye Ranch School for the next 2 years and those in the PGA Gifted Program?

Yes, all middle school students which live within the proposed Scenario attendance boundary including Kindergarten through Eighth Grade are included in the projections and utilization rates to ensure we provide a financially feasible scenario with enough students in all schools affected by the rebalancing.



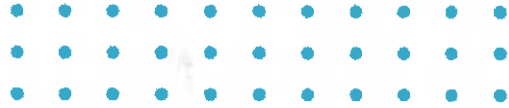


Frequently Asked Questions



Why does Skye Ranch School not have a 10 Day Student Count?

The 2024-25 10 Day Count is the number of students enrolled in Ashton Elementary, Lakeview Elementary and Sarasota Middle School on August 16, 2024. Skye Ranch School is not open yet therefore they do not have students currently enrolled on that date.



Will the same electives, athletic programs and other programs like choir, school newspaper etc. be offered for Sixth Grade Students next year.

No. Schools will be the same academically but athletics and other after school programs are currently being devised for when all grade levels attend Skye Ranch School. The rebalancing process includes the District Team facilitating and providing information for the BAC to provide feedback to expand the successful similar models of the three similar schools to set all schools up for success.



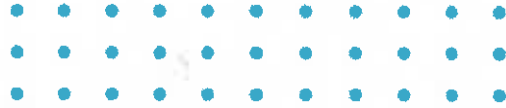


Frequently Asked Questions



How is Free and Reduced Lunch (FRL) going to impact the schools?

None of the schools involved in the rebalancing will become Title I Schools and all are projected to be under 45% FRL.



What happens to students that continue to attend Ashton Elementary, Lakeview Elementary and Sarasota Middle School which, through an address audit, are found to no longer reside within their attendance zone?

School Board Policy 5.201 permits families that move out of an attendance zone to apply for Reassignment to remain at the school of origin. If it is found that a family falsified information resulting in improper assignment, the student will be withdrawn from the assigned school and transferred (without regard to parental preference) to their districted school.





Frequently Asked Questions



If Skye Ranch School becomes overcapacity due to all the proposed growth in the area, will they have portables?

Yes, but Skye Ranch School has identified a location for a future classroom wing addition on the school site. The K-8 school site was purchased in 2019 as part of the LT Ranch 2050 Village MDO to provide school capacity for the anticipated growth and to relieve overcapacity at nearby schools. To warrant the need to open a new school, current schools must be overcapacity to allow for a Financially Feasible new school to operate including costs of purchasing property, construction of a new school, projected students to open a new school and staffing.



What happened with the previous school site in Palmer Ranch?

The School Board sold the property back to the Master Developer due to the economic crash in 2008 which halted new development and resulted in declining growth as families with students were not moving into the area.





Frequently Asked Questions



Will the south school site relieve Laurel Nokomis K-8 School?

The exact location of the school site has yet to be determined. The approximate location was provided to assist the BAC in understanding potential future school sites that may impact meeting the primary objective to minimize the redistricting of a student multiple times. The School District is currently working with the developer and local government to identify a school site as required in the Unified Land Development Code.



Has the School Board addressed the safety of transporting K-8 students regarding the diverse age ranges on the same bus?

Yes. The School Board currently transports K-8 students to Laurel Nokomis School and provides a seating chart assigning the younger students to the front of the bus. The School Bus Driver enforces the seating chart with the assistance of School Site Administrators if needed.





Frequently Asked Questions



How were transportation times and costs calculated?

The route times are based on the transporting students outside the 2-mile walking distance by each Scenario determining bus stop locations based on where the existing students reside. The projected costs for transportation were calculated with "deadhead miles", miles a bus travels without students, from the closest Osprey Transportation Compound to the new K-8 School location. The costs include driver salaries, fuel and ancillary costs. The actual cost may be less when the actual Bus Routes are established due to the K-8 Bus Route including less deadhead miles by going to other school sites before and/or after traveling to the Skye Ranch School.



If there is an incident on the bus what jurisdiction does that fall under?

The local jurisdiction in which the incident took place would be contacted to respond to incidents on the bus. The Sarasota County Schools Police Department would collaborate with the Sheriff's Office or local law enforcement department regarding any incidents.





Frequently Asked Questions



What are the proposed Strategic Plan Goals of Pre-K and Specialized Programs at all elementary schools?

The School District's goal is to offer early learning opportunities through the State's Voluntary Pre-Kindergarten (VPK) program in all elementary schools in the next two years. There are other programs and students with profound needs which the School District needs to ensure we can meet the needs of each student at our schools by providing appropriate staffing and school spaces to meet School Board Policies and Florida Statutes.



Why was reducing overcapacity at Sarasota Middle School not included in the objectives?

Sarasota Middle is not currently overcapacity but nearing capacity. Rebalancing would allow for growth and expansion of magnet program.





Frequently Asked Questions



Will the Boundary Advisory Committee (B.A.C.) continue to meet?

No, the BAC's work is complete and will no longer need to meet. The SCS District Team appreciates the BAC's genuine leadership, willingness to serve, and commitment to the process.



Frequently Asked Questions

How are the Scenarios going to be presented and will the School Board see the Scenario Scorecards?

The BAC's input regarding the three feasible scenarios reviewed will be presented to the School Board at the November 6, 2024, School Board Workshop. Scorecards for each scenario as well as final rankings provided by the BAC will be shared. A public information meeting will be conducted prior to the November 19th, School Board Meeting for the public to provide input on the attendance boundary recommendations for Skye Ranch School. On November 19, 2024, the Board will take into consideration information provided at the workshop, the BAC's committee input and rankings; public comment, and the superintendent/staff recommendations regarding the three attendance zone scenarios considered for Skye Ranch K-8. The Sarasota County School Board will make the final decision on the adoption of the required redistricting to open Skye Ranch K-8 in August 2025.





QUESTIONS?





EVERY STUDENT. EVERY DAY!



November 6, 2024 Board Meeting
Agenda Item 4.

Title

BOARD COMMENTS

Contact

BOARD