



---

**THE SCHOOL BOARD OF SARASOTA COUNTY, FLORIDA**  
**Landings Administrative Complex**  
**1980 Landings Blvd.**  
**11:00 AM**

**November 22, 2024 Board Meeting**

**Call to Order**

**Flag Salute**

**Hearing of Citizens - Agenda**

**Board Discussion and Actions**

1. **ADOPTION OF THE NEW ATTENDANCE BOUNDARIES FOR SKYE RANCH SCHOOL, ASHTON ELEMENTARY, LAKEVIEW ELEMENTARY AND SARASOTA MIDDLE SCHOOLS**

Description

As outlined in the School District's five-year capital plan, the new Skye Ranch School will open to students the summer of 2025. Planning for the opening of this school started several years ago in conjunction with the developers from LT Ranch and 3H Ranch to accommodate the growth from the development east of the interstate and to relieve Ashton Elementary, Lakeview Elementary, and Sarasota Middle which are over capacity or nearing capacity. Approximately 906 Prekindergarten through 6<sup>th</sup> grade students will be affected by these boundary adjustments in the 2025/2026 school year. As outlined in School Board Policy 5.20, the District planning team convened a Boundary Advisory Committee to consider several proposed boundary adjustments. The proposed school boundaries recommended for Skye Ranch School, Ashton Elementary, Lakeview Elementary and Sarasota Middle reflect the input of the Boundary Advisory Committee as well as the District planning team. The boundary adjustments address capacity issues at current sites and provide for a newly formed attendance boundary for Skye Ranch School that is economically feasible and meets the region's projected growth.

Gap Analysis:

Attendance boundary adjustments are needed to balance growth in this area, provide for a level of service to open Skye Ranch School effectively and economically and address the overcapacity of existing schools.

Previous Outcomes:

The School Board has approved previous boundary adjustments as recommended by the Planning team.

Expected Outcomes:

That the proposed boundary adjustments be approved as presented.

Strategic Plan Goal

Pillar 4 - Every School Equipped

Priority 2 - Create High Quality Infrastructure

Recommendation:

That the recommendation for attendance boundary adjustments be approved as presented.

Contact:

DIANE COMINOTTI [diane.cominotti@sarasotacountyschools.net](mailto:diane.cominotti@sarasotacountyschools.net)

MICHAEL KEMP [michael.kemp@sarasotacountyschools.net](mailto:michael.kemp@sarasotacountyschools.net)

Financial Impact:

N/A

**Board Members Comments/Assignments**

**Adjournment**



## **November 22, 2024 Board Meeting**

### **Agenda Item 1.**

#### **Title**

ADOPTION OF THE NEW ATTENDANCE BOUNDARIES FOR SKYE RANCH SCHOOL, ASHTON ELEMENTARY, LAKEVIEW ELEMENTARY AND SARASOTA MIDDLE SCHOOLS

#### **Description**

As outlined in the School District's five-year capital plan, the new Skye Ranch School will open to students the summer of 2025. Planning for the opening of this school started several years ago in conjunction with the developers from LT Ranch and 3H Ranch to accommodate the growth from the development east of the interstate and to relieve Ashton Elementary, Lakeview Elementary, and Sarasota Middle which are over capacity or nearing capacity.

Approximately 906 Prekindergarten through 6<sup>th</sup> grade students will be affected by these boundary adjustments in the 2025/2026 school year. As outlined in School Board Policy 5.20, the District planning team convened a Boundary Advisory Committee to consider several proposed boundary adjustments. The proposed school boundaries recommended for Skye Ranch School, Ashton Elementary, Lakeview Elementary and Sarasota Middle reflect the input of the Boundary Advisory Committee as well as the District planning team. The boundary adjustments address capacity issues at current sites and provide for a newly formed attendance boundary for Skye Ranch School that is economically feasible and meets the region's projected growth.

#### **Gap Analysis**

Attendance boundary adjustments are needed to balance growth in this area, provide for a level of service to open Skye Ranch School effectively and economically and address the overcapacity of existing schools.

#### **Previous Outcomes**

The School Board has approved previous boundary adjustments as recommended by the Planning team.

#### **Expected Outcomes**

That the proposed boundary adjustments be approved as presented.

**Strategic Plan Goal**

Pillar 4 - Every School Equipped

Priority 2 - Create High Quality Infrastructure

**Recommendation**

That the recommendation for attendance boundary adjustments be approved as presented.

**Contact Information**

DIANE COMINOTTI [diane.cominotti@sarasotacountyschools.net](mailto:diane.cominotti@sarasotacountyschools.net)

MICHAEL KEMP [michael.kemp@sarasotacountyschools.net](mailto:michael.kemp@sarasotacountyschools.net)

**Financial Impact**

N/A

**ATTACHMENTS:**

Description	Upload Date	Type
Skye Ranch Boundary Recommendations	11/9/2024	Cover Memo



Boundary Advisory Committee

# SKYE RANCH BOUNDARY RECOMMENDATION

November 6, 2024





# SKYE RANCH SCHOOL K-8

Redistricting Scenarios and Recommendations















# Skye Ranch School



- Construction Update/Progress
- Ms. Jamie Hannon, Principal appointed May 2024
- School Name and Mascot, Board approved September 3, 2024



# District Team

**Dr. Michael Kemp**

*Chief Operations Officer*

**Dr. Brandon Johnson**

*Chief of Middle Schools*

**Ms. Jennifer Mainelli**

*Chief of Elementary Schools*

**Mr. Jody Dumas**

*Executive Director, Facilities*

**Ms. Diane Cominotti**

*Director of Planning*

**Dr. Denise Cantalupo**

*Executive Director, Accountability & Choice*

**Ms. Millie Wheeler**

*Supervisor, School Choice & Charter Schools*

**Ms. Charlotte Price**

*Assistant Director, Transportation*

**Ms. Sara Dan**

*Director, Food & Nutrition*

**Mr. Craig Maniglia**

*Director, Communications*

**Ms. Amy Anderson**

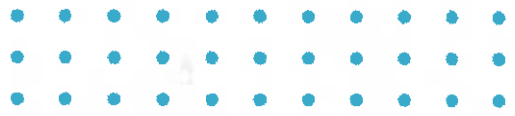
*Planning Analyst*

**Mr. Chris Joseph**

*GIS Planning Technician*

**Ms. Micki Ryan**

*Planning Consultant*





# Boundary Advisory Committee (B.A.C.) Members



## Ashton Elementary

**Kristi Jarvis**  
*Principal*

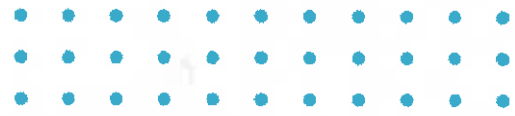
**Christine Herrington**  
*SAC Chair/Teacher Rep.*

**Katherine Patti**  
*Parent Rep.*

**Taylor Mock**  
*Parent Rep.*

**Glenn Scharf**  
*Parent Rep.*

**Ali McCarthy**  
*Parent Rep.*



## Lakeview Elementary

**Michelle Giddens**  
*Principal*

**Mavis Seger**  
*SAC Chair/Teacher Rep.*

**Lindsay D'Agostino**  
*Parent Rep.*

**Sophie O'Leary**  
*Parent Rep.*

**Kevin Robbins**  
*Parent Rep.*

**Michael Richards**  
*Parent Rep.*

## Sarasota Middle

**Jennifer Nzeza**  
*Principal*

**Dr. Brooks Tracey**  
*SAC Chair/Teacher Rep.*

**Pia Rex**  
*Parent Rep.*

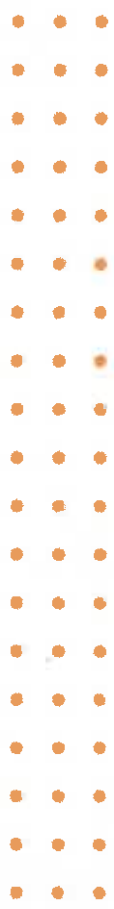
**Gina Rogers**  
*Parent Rep.*

**Cinzia Iannicello Anderson**  
*Parent Rep.*

**Marikate Tippy**  
*Parent Rep.*



# Boundary Advisory Committee (B.A.C.) Purpose



**School Board Policy 5.20** establishes the School Board's expectations when it becomes necessary to reorganize School District attendance boundary lines.

The policy establishes the formation of a Boundary Advisory Committee to assist in the development of the proposed changes.







# Boundary Advisory Committee (B.A.C.) Purpose



Pursuant to School Board Policy 5.2, the following guidelines will be used whenever possible:

- Attendance areas will be designed to incorporate entire neighborhoods, keeping neighboring children together and contributing to an efficient, effective and economic transportation configuration.
- Redistricting shall strive to assure school are left with a capacity that allows for growth from new neighborhoods.
- Every attempt will be made to not require the moving of students who moved due to a prior redistricting.
- When attendance boundaries are changed, elementary and secondary students with one year remaining in their present school will have the option of remaining.





# Publicly Advertised Meetings



- April 24, 2024 (B.A.C. Meeting)
- May 22, 2024 (B.A.C. Meeting)
- October 2, 2024 (B.A.C Meeting)
- November 6, 2024 – Board Workshop
- November 19, 2024 – Public Hearing
- November 19, 2024 – Board Action



\* Agenda and Minutes for each public meeting are posted via SCS website.

\* Public input/ comments/ questions have remained open via SCS website since the inception of B.A.C. for Skye Ranch School.

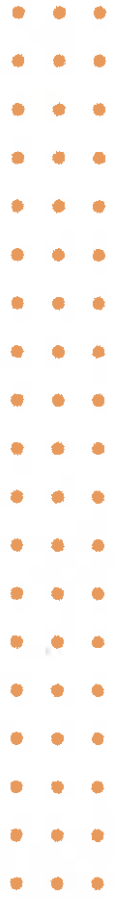




# REDISTRICTING:

**Guidelines, Methodology, and Process**

# Boundary Development, Considerations, & Feasibility



- i. **Relieve overcapacity** schools  
(Ashton, Lakeview, Sarasota Middle)
- ii. **Meet Level of Service (LOS)** requirements to open Skye Ranch School
- iii. **GIS/SIS** – platforms used to drive feasibility with boundary scenarios





# Methodology

- **Use Natural Boundaries**  
(Bridges, Waterways, Major Thoroughfares/Roadways)
- **Current Capacity and Utilization Within the Study Area Impacted**  
(LOS-Level of Service)
- **Address Growth**  
(Current and Projected Planned Development)
- **Portable Reduction Act**  
(Impacts LOS; Address Safety-Age/Security-Hardening)
- **Geographic Proximity**



# Methodology

- **Transportation Efficiency/Logistics**  
(Impacts on Routing, Costs, Etc.)
- **Safety Considerations**  
(Hazardous Walking Conditions Within a Two-Mile Radius, Etc.)
- **Avoid Division of Students Within the Same Neighborhood/Street**
- **Avoid Multiple Moves**  
(Moving Impacted Students in a Study Area Twice)
- **Programmatic Equity**  
(Pre-K and Specialized Program Opportunities for All Elem. Schools)





# Boundary Development, Considerations, and Feasibility



## Primary Planning Variables

*Grounded in Florida Statutes, State Requirements for Educational Facilities (SREF) and Board Policy*

### **i. Current Capacity Utilization Within the Study Area Impacted**

- Florida Statute 163.3180(6)(a) Concurrency
- School Board Policy 7.78 - Adequacy of Educational Facilities and Growth Management

### **ii. Address Growth**

- Florida Statute 163.3180(6)(a) Concurrency
- School Board Policy 7.78 - Adequacy of Educational Facilities and Growth Management





# Boundary Development, Considerations, and Feasibility



### **iii. Portable Reduction Plan**

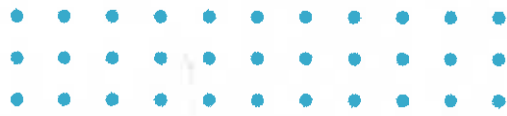
1. Florida Statute 1013.21
2. School District Capital Improvement Plan Annual Portable Utilization Report

### **iv. Transportation**

1. Florida Statute 1006.21 - Transportation
2. School Board Policy 8.32 - Bus Routes

### **v. Safety Considerations**

1. Florida Statute 1006.23 - Hazardous Walking Conditions
2. School Board Policy 8.31 - Student Transportation







# FEASIBLE SCENARIO DEVELOPMENT

(3 presented to B.A.C)

# SCENARIO #1 - Elementary





# SCENARIO #1 - Middle



# SCENARIO #1

SCHOOL	Permanent FISH Capacity	Current # of Portables	2024-2025 10-Day Count of Resident Students	% of Resident Student Utilization	Students Remaining After Rebalance	Total Students Rebalanced	Projected % Utilization	Projected # of Portables
Ashton Elementary	734	36	1,018	139%	667	414	91%	0
Lakeview Elementary	594	15	994	167%	669	324	113%	4
Sarasota Middle School	1,406	8	1,522	108%	1,073	449	76%	0
Skye Ranch K-8 School	1,382	-	-	-	-	1,187	86%	0

## Transportation Costs and Ride Times:

	Current	Projected	Difference
Cost	\$476,680.50	\$493,951.50	\$17,271.00
Average Ride Time	23 minutes	25 minutes	+2 minutes





# SCENARIO #2 - Elementary





# SCENARIO #2 - Middle



# SCENARIO #2

SCHOOL	Permanent FISH Capacity	Current # of Portables	2024-2025 10-Day Count of Resident Students	% of Resident Student Utilization	Students Remaining After Rebalance	Total Students Rebalanced	Projected % Utilization	Projected # of Portables
Ashton Elementary	734	36	1,018	139%	855	226	116%	7
Lakeview Elementary	594	15	994	167%	669	324	113%	4
Sarasota Middle School	1,406	8	1,522	108%	1,343	179	96%	0
Skye Ranch K-8 School	1,382	-	-	-	-	729	53%	0

## Transportation Costs and Ride Times:

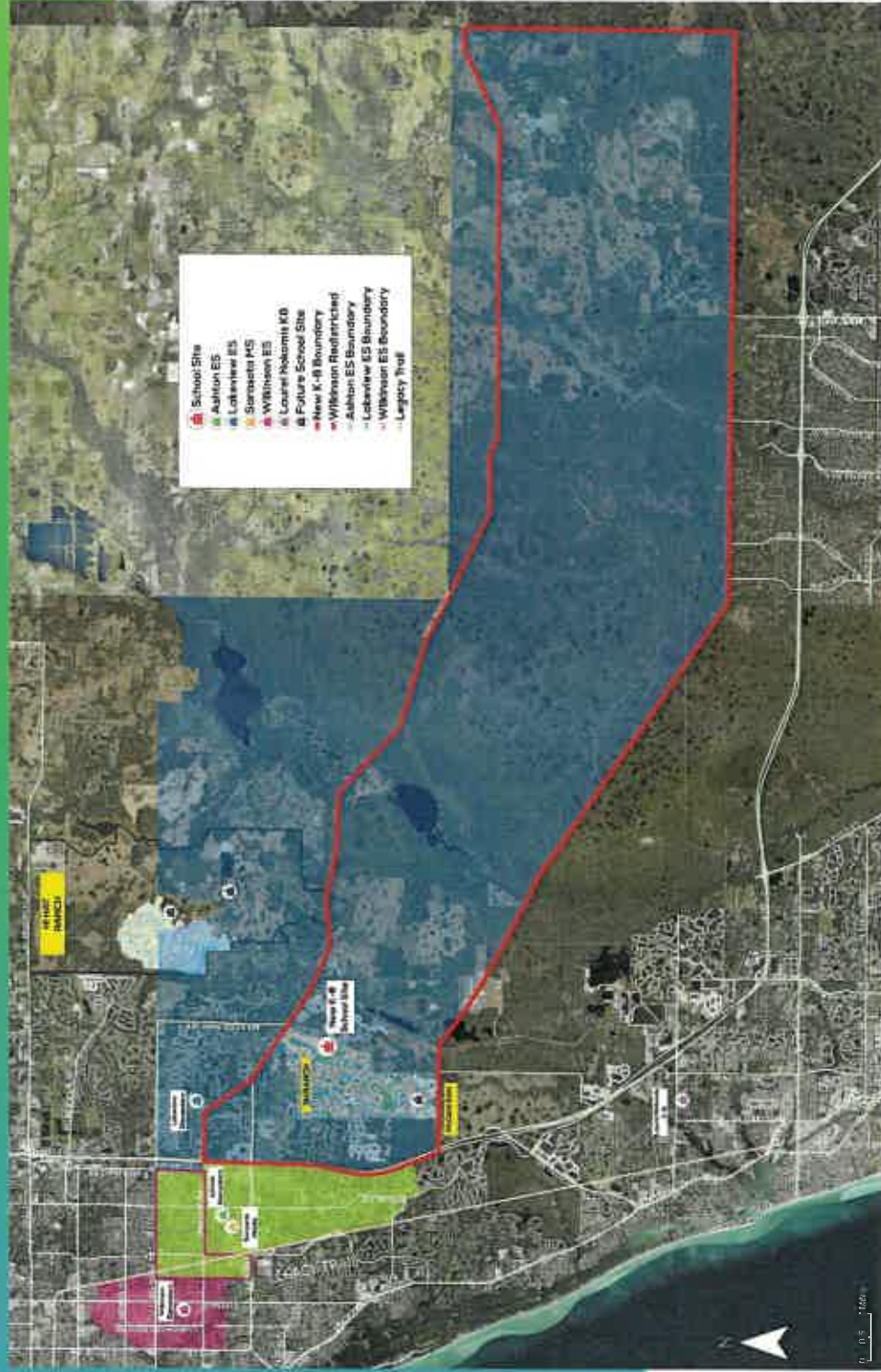
	Current	Projected	Difference
Cost	\$476,680.50	\$493,951.50	\$17,271.00
Average Ride Time	23 minutes	25 minutes	+2 minutes





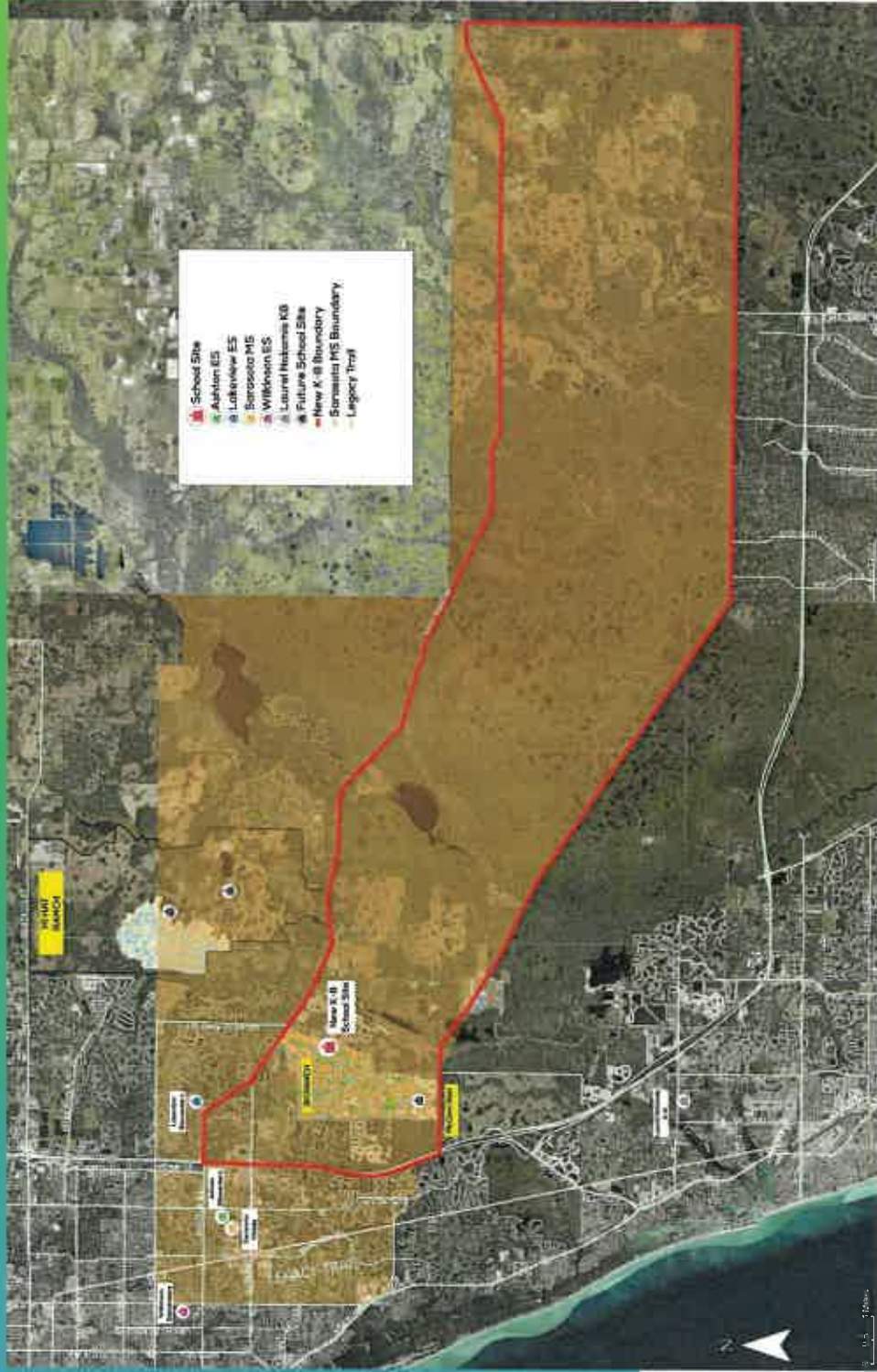


# SCENARIO #3 - Elementary





# SCENARIO #3 - Middle





# SCENARIO #3

SCHOOL	Permanent FISH Capacity	Current # of Portables	2024-2025 10-Day Count of Resident Students	% of Resident Student Utilization	Students Remaining After Rebalance	Total Students Rebalanced	Projected % Utilization	Projected # of Portables
Ashton Elementary	734	36	1,018	139%	769	323*	105%	2
Lakeview Elementary	594	15	994	167%	575	419	97%	0
Wilkinson Elementary	786	0	668	85%	991	0	126%	11
Sarasota Middle School	1,406	8	1,522	108%	1275	247	91%	0
Skye Ranch K-8 School	1,382	-	-	-	666	666	48%	0

\*Students rebalanced from Ashton to Wilkinson

## Transportation Costs and Ride Times:

	Current	Projected	Difference
Cost	\$565,805.50	\$565,812.90	\$7,077.40
Average Ride Time	24 minutes	26 minutes	+2 minutes





# ADDITIONAL SCENARIOS ANALYZED

Per B.A.C. Member Request





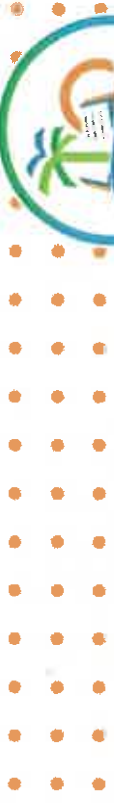
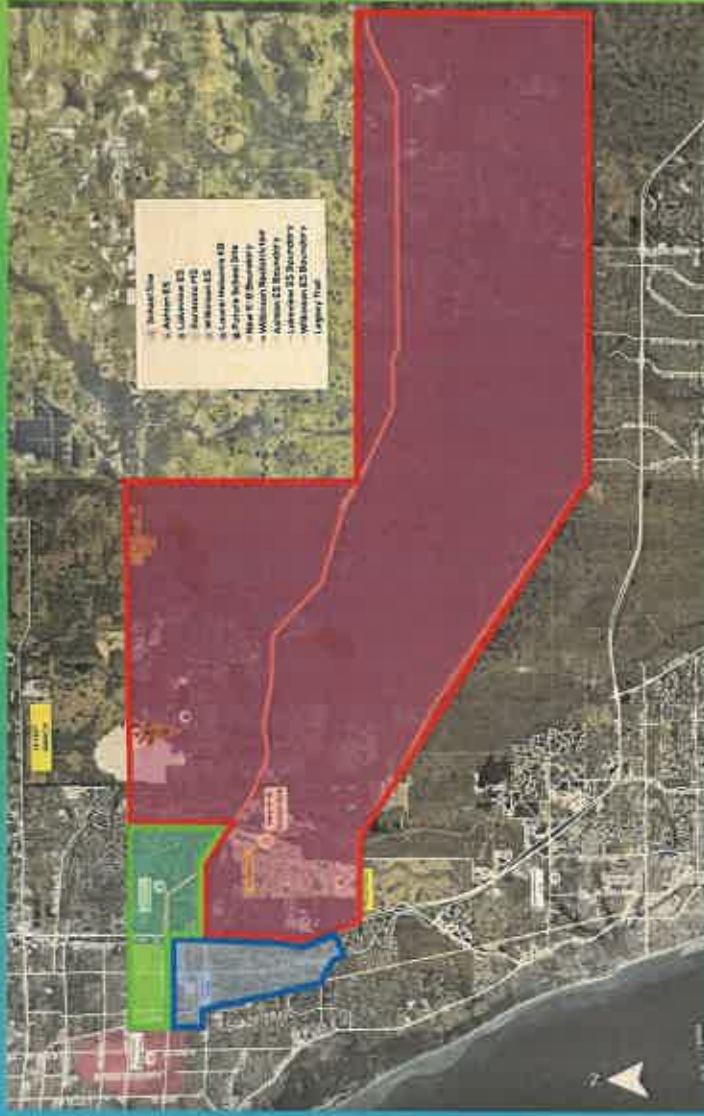
# Suggested Scenario Analysis and Feasibility



1. Four additional boundary scenarios were analyzed, and each were determined to be “not feasible” due to one, some or all the following justifications:
  - i. Boundary does not reduce the capacity at impacted schools.
  - ii. Boundary does not generate an acceptable level of service to open Skye Ranch.
  - iii. Boundary does not effectively satisfy primary planning variables.
  - iv. Boundary does not effectively satisfy operational variables.
  - v. Boundary does not align with best practice.
  
2. The data associated with additional scenarios was presented and shared publicly with the B.A.C.



# ADDITIONAL SCENARIO #3.1



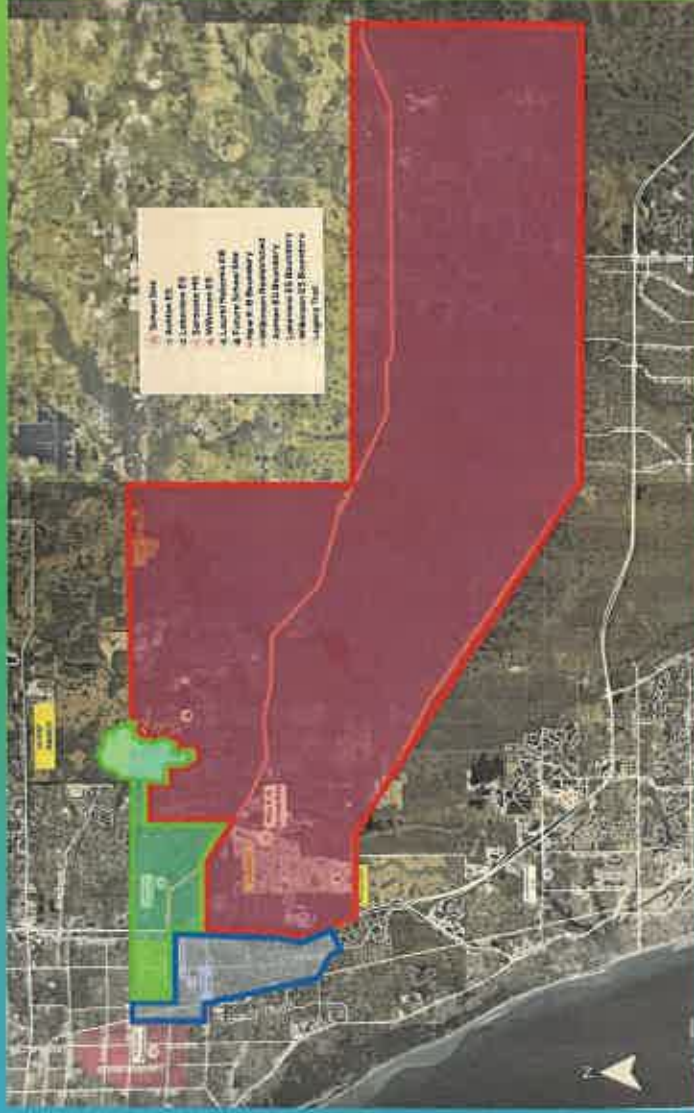
Results in only 549 students to new K-8 (40% Capacity) while leaving Ashton and Lakeview overcapacity.

**NOT FEASIBLE!**





# ADDITIONAL SCENARIO #3.2



Results in only 648 students to new K-8 (47% Capacity) while leaving Ashton and Lakeview overcapacity.

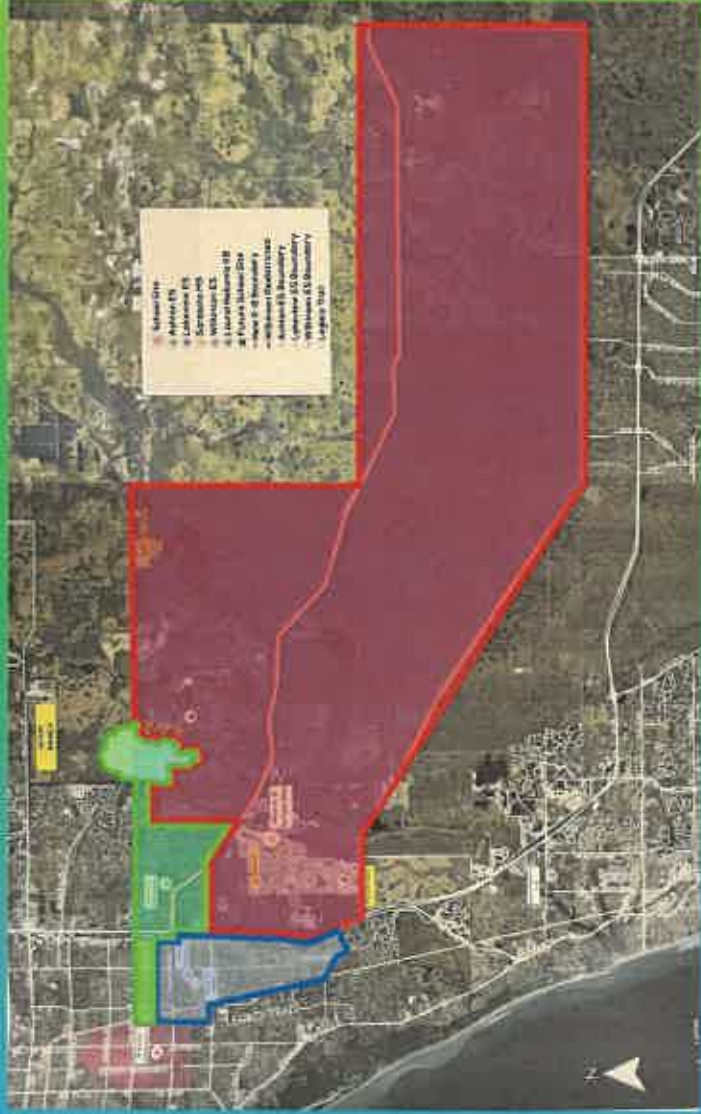
**NOT FEASIBLE!**







# ADDITIONAL SCENARIO #3.3



Results in only 583 students to new K-8 (42% Capacity) while leaving Ashton and Lakeview overcapacity.

**NOT FEASIBLE!**





# B.A.C. ANALYSIS, SCORING, AND FINAL RANKING OF FEASIBLE SCENARIOS



# The Process

- The B.A.C. Teams scored and ranked all feasible scenarios by utilizing a numeric scoring rubric that assessed whether the scenario meets or did not meet the primary, operational, and best practice variables. (Yes = 1, No = 0)
- The B.A.C. Teams produced a total score for each feasible scenario to yield a 1, 2, 3 ranking for Board consideration.
- In the event of a tie between scenarios, the B.A.C. Team review the detailed data associated with each scenario and pursued team consensus as to which scenario best met the primary, operational, and best practice variables to produce a final ranking for Board consideration.
- The results and final rankings of each B.A.C. Team was shared publicly.
- The result of each B.A.C. Team was then combined to determine a B.A.C. overall ranking of the feasible scenarios for the Board's consideration.



# Skye Ranch School Scorecard Protocol

## TEAM ACTIVITY

YES = 1

NO = 0

### OBJECTIVE

*Keeps Neighborhoods Intact*

*Reduces Overcapacity At Ashton*

*Reduces Overcapacity At Lakeview*

*Allows For Growth At Sarasota Middle School*

*Meets Population Number For K-8, 800 Elementary, 500 Middle*

*Does Not Require A Second Redistricting*

*Minimal Impact On Student Ride Times*

*Minimizes Hazardous Walking Conditions*

*Minimizes Impact on Transportation*

*Fits Into Overall Growth Plan for School District and New Schools Planned For Future*

*Supports The District's Portable Reduction Plan*

*Aligns With Strategic Plan Goal Of Pre-K and Specialized Programs at ALL Elementary Schools*

### SCORING DIRECTIONS: (30 mins)

1. Score each objective (Yes=1, No=0)
2. Produce score for each scenario
3. In the event of a numeric tie with scenarios, compare variables such as: utilization rates, transportation costs, etc. to create the team's final ranking.
4. Results for each team will be used to provide a final ranking of the three scenarios to be presented as the BAC's recommendation to the Board.

### Questions about a variable?

District Facilitator Available







# TEAM 1 - SCORING

Sarasota Middle School

# TEAM 1 – Scenario 1 Scorecard

OBJECTIVE	YES = 1	NO = 0
Keeps Neighborhoods Intact	1	
Reduces Overcapacity At Ashton	1	
Reduces Overcapacity At Lakeview	1	
Allows For Growth At Sarasota Middle School	1	
Meets Population Number For K-8, 800 Elementary, 500 Middle	1	
Does Not Require A Second Redistricting	1	
Minimal Impact On Student Ride Times	1	
Minimizes Hazardous Walking Conditions	1	
Minimizes Impact on Transportation	1	
Fits Into Overall Growth Plan for School District and New Schools Planned For Future	1	
Supports The District's Portable Reduction Plan	1	
Aligns With Strategic Plan Goal Of Pre-K and Specialized Programs at ALL Elementary Schools	1	
<b>TEAM 1 – SCENARIO 1 SCORE</b>	<b>12</b>	

SCHOOL	Perm. FISH Capacity	Current # of Portables	24-25 10-Day Count Resident Students	% of Resident Student Utilization	Students Remaining After Rebalance	Total Students Rebalanced	Projected % Utilization	Projected # Portables
Ashton Elementary	734	36	1,018	139%	667	414	91%	0
Lakeview Elementary	594	15	994	167%	669	324	113%	4
Sarasota Middle School	1,406	8	1,522	108%	1,073	449	76%	0
Skye Ranch K-8 School	1,382	-	-	-	-	1,187	<b>86%</b>	<b>0</b>

## Transportation Costs and Ride Times:

	Current	Projected	Difference
Cost	\$476,680.50	\$493,951.50	\$17,271.00
Average Ride Time	23 minutes	25 minutes	+2 minutes



# TEAM 1 – Scenario 2 Scorecard

OBJECTIVE	YES = 1	NO = 0
Keeps Neighborhoods Intact	1	
Reduces Overcapacity At Ashton	1	
Reduces Overcapacity At Lakeview	1	
Allows For Growth At Sarasota Middle School	1	
Meets Population Number For K-8, 800 Elementary, 500 Middle	1	
Does Not Require A Second Redistricting	1	
Minimal Impact On Student Ride Times	1	
Minimizes Hazardous Walking Conditions	1	
Minimizes Impact on Transportation	1	
Fits Into Overall Growth Plan for School District and New Schools Planned For Future	1	
Supports The District's Portable Reduction Plan	1	
Aligns With Strategic Plan Goal Of Pre-K and Specialized Programs at ALL Elementary Schools	1	
<b>TEAM 1 – SCENARIO 2 SCORE</b>	<b>12</b>	

SCHOOL	Perm. FISH Capacity	Current # of Portables	24-25 10- Day Count Resident Students	% of Resident Student Utilization	Students Remaining After Rebalance	Total Students Rebalanced	Projected % Utilization	Projected # Portables
Ashton Elementary	734	36	1,018	139%	855	226	116%	7
Lakeview Elementary	594	15	994	167%	669	324	113%	4
Sarasota Middle School	1,406	8	1,522	108%	1,343	179	96%	0
Skye Ranch K-8 School	1,382	-	-	-	-	729	<b>53%</b>	<b>0</b>

## Transportation Costs and Ride Times:

	Current	Projected	Difference
Cost	\$476,680.50	\$493,951.50	\$17,271.00
Average Ride Time	23 minutes	25 minutes	+2 minutes



# TEAM 1 – Scenario 3 Scorecard

OBJECTIVE	YES = 1 NO = 0	
	Keeps Neighborhoods Intact	1
Reduces Overcapacity At Ashton	1	
Reduces Overcapacity At Lakeview	1	
Allows For Growth At Sarasota Middle School	1	
Meets Population Number For K-8, 800 Elementary, 500 Middle	0	
Does Not Require A Second Redistricting	1	
Minimal Impact On Student Ride Times	1	
Minimizes Hazardous Walking Conditions	0	
Minimizes Impact on Transportation	1	
Fits Into Overall Growth Plan for School District and New Schools Planned For Future	0	
Supports The District's Portable Reduction Plan	0	
Aligns With Strategic Plan Goal Of Pre-K and Specialized Programs at ALL Elementary Schools	1	
<b>TEAM 1 – SCENARIO 3 SCORE</b>	<b>8</b>	

SCHOOL	Perm. FISH Capacity	Current # of Portables	24-25 10-Day Count Resident Students	% of Resident Student Utilization	Students Remaining After Rebalance	Total Students Rebalanced	Projected % Utilization	Projected # Portables
Ashton Elementary	734	36	1,018	139%	769	323*	105%	2
Lakeview Elementary	594	15	994	167%	575	419	97%	0
Wilkinson Elementary	786	0	668	85%	991	0	126%	11
Sarasota Middle School	1,406	8	1,522	108%	1275	247	91%	0
Skye Ranch School K-8	1,382	-	-	-	666	666	<b>48%</b>	<b>0%</b>

\*Students rebalanced from Ashton to Wilkinson.

## Transportation Costs and Ride Times:

	Current	Projected	Difference
Cost	\$565,805.50	\$565,812.90	\$7,077.40
Average Ride Time	24 minutes	26 minutes	+2 minutes





# Team 1 Final Ranking

Team 1 – Sarasota Middle School RANK

**Scenario 1**

**1**

**Scenario 2**

**2**

**Scenario 3**

**3**





# TEAM 2 - Scoring

Lakeview Elementary School



# TEAM 2 – Scenario 1 Scorecard

OBJECTIVE	YES = 1	NO = 0
Keeps Neighborhoods Intact	1	
Reduces Overcapacity At Ashton	1	
Reduces Overcapacity At Lakeview	1	
Allows For Growth At Sarasota Middle School	1	
Meets Population Number For K-8, 800 Elementary, 500 Middle	0	
Does Not Require A Second Redistricting	0	
Minimal Impact On Student Ride Times	1	
Minimizes Hazardous Walking Conditions	0	
Minimizes Impact on Transportation	1	
Fits Into Overall Growth Plan for School District and New Schools Planned For Future	1	
Supports The District's Portable Reduction Plan	1	
Aligns With Strategic Plan Goal Of Pre-K and Specialized Programs at ALL Elementary Schools	1	
<b>TEAM 2 – SCENARIO 1 SCORE</b>	<b>9</b>	

SCHOOL	Perm. FISH Capacity	Current # of Portables	24-25 10-Day Count Resident Students	% of Resident Student Utilization	Students Remaining After Rebalance	Total Students Rebalanced	Projected % Utilization	Projected # Portables
Ashton Elementary	734	36	1,018	139%	667	414	91%	0
Lakeview Elementary	594	15	994	167%	669	324	113%	4
Sarasota Middle School	1,406	8	1,522	108%	1,073	449	76%	0
Skye Ranch K-8 School	1,382	-	-	-	-	1,187	86%	0

## Transportation Costs and Ride Times:

	Current	Projected	Difference
Cost	\$476,680.50	\$493,951.50	\$17,271.00
Average Ride Time	23 minutes	25 minutes	+2 minutes



# TEAM 2 – Scenario 2 Scorecard

OBJECTIVE	YES = 1 NO = 0
Keeps Neighborhoods Intact	1
Reduces Overcapacity At Ashton	1
Reduces Overcapacity At Lakeview	1
Allows For Growth At Sarasota Middle School	0
Meets Population Number For K-8, 800 Elementary, 500 Middle	0
Does Not Require A Second Redistricting	1
Minimal Impact On Student Ride Times	1
Minimizes Hazardous Walking Conditions	0
Minimizes Impact on Transportation	1
Fits Into Overall Growth Plan for School District and New Schools Planned For Future	1
Supports The District's Portable Reduction Plan	1
Aligns With Strategic Plan Goal Of Pre-K and Specialized Programs at ALL Elementary Schools	1
<b>TEAM 2 – SCENARIO 2 SCORE</b>	<b>9</b>

SCHOOL	Perm. FISH Capacity	Current # of Portables	24-25 10- Day Count Resident Students	% of Resident Student Utilization	Students Remaining After Rebalance	Total Students Rebalanced	Projected % Utilization	Projected # Portables
Ashton Elementary	734	36	1,018	139%	855	226	116%	7
Lakeview Elementary	594	15	994	167%	669	324	113%	4
Sarasota Middle School	1,406	8	1,522	108%	1,343	179	96%	0
Skye Ranch K-8 School	1,382	-	-	-	-	729	53%	0

## Transportation Costs and Ride Times:

	Current	Projected	Difference
<b>Cost</b>	\$476,680.50	\$493,951.50	\$17,271.00
<b>Average Ride Time</b>	23 minutes	25 minutes	+2 minutes





# TEAM 2 – Scenario 3 Scorecard

OBJECTIVE	YES = 1 NO = 0
Keeps Neighborhoods Intact	0
Reduces Overcapacity At Ashton	1
Reduces Overcapacity At Lakeview	1
Allows For Growth At Sarasota Middle School	1
Meets Population Number For K-8, 800 Elementary, 500 Middle	0
Does Not Require A Second Redistricting	1
Minimal Impact On Student Ride Times	1
Minimizes Hazardous Walking Conditions	0
Minimizes Impact on Transportation	1
Fits Into Overall Growth Plan for School District and New Schools Planned For Future	0
Supports The District's Portable Reduction Plan	0
Aligns With Strategic Plan Goal Of Pre-K and Specialized Programs at ALL Elementary Schools	0
<b>TEAM 2 – SCENARIO 3 SCORE</b>	<b>6</b>

SCHOOL	Perm. FISH Capacity	Current # of Portables	24-25 10-Day Count Resident Students	% of Resident Student Utilization	Students Remaining After Rebalance	Total Students Rebalanced	Projected % Utilization	Projected # Portables
Ashton Elementary	734	36	1,018	139%	769	323*	105%	2
Lakeview Elementary	594	15	994	167%	575	419	97%	0
Wilkinson Elementary	786	0	668	85%	991	0	126%	11
Sarasota Middle School	1,406	8	1,522	108%	1275	247	91%	0
Skye Ranch School K-8	1,382	-	-	-	666	666	48%	0%

\*Students rebalanced from Ashton to Wilkinson.

## Transportation Costs and Ride Times:

	Current	Projected	Difference
Cost	\$565,805.50	\$565,812.90	\$7,077.40
Average Ride Time	24 minutes	26 minutes	+2 minutes



# Team 2 Final Ranking

## Team 2 – Lakeview Elementary

## RANK

**Scenario 1**

**1**

**Scenario 2**

**2**

**Scenario 3**

**3**





# TEAM 3 - SCORING

Ashton Elementary School



# TEAM 3 – Scenario 1 Scorecard

**OBJECTIVE**  
 YES = 1  
 NO = 0

Keeps Neighborhoods Intact	1
Reduces Overcapacity At Ashton	1
Reduces Overcapacity At Lakeview	0
Allows For Growth At Sarasota Middle School	1
Meets Population Number For K-8, 800 Elementary, 500 Middle	1
Does Not Require A Second Redistricting	0
Minimal Impact On Student Ride Times	1
Minimizes Hazardous Walking Conditions	1
Minimizes Impact on Transportation	1
Fits Into Overall Growth Plan for School District and New Schools Planned For Future	0
Supports The District's Portable Reduction Plan	1
Aligns With Strategic Plan Goal Of Pre-K and Specialized Programs at ALL Elementary Schools	1
<b>TEAM 3 – SCENARIO 1 SCORE</b>	<b>9</b>

SCHOOL	Perm. FISH Capacity	Current # of Portables	24-25 10-Day Count Resident Students	% of Resident Student Utilization	Students Remaining After Rebalance	Total Students Rebalanced	Projected % Utilization	Projected # Portables
Ashton Elementary	734	36	1,018	139%	667	414	91%	0
Lakeview Elementary	594	15	994	167%	669	324	113%	4
Sarasota Middle School	1,406	8	1,522	108%	1,073	449	76%	0
Skye Ranch K-8 School	1,382	-	-	-	-	1,187	86%	0

## Transportation Costs and Ride Times:

	Current	Projected	Difference
<b>Cost</b>	\$476,680.50	\$493,951.50	\$17,271.00
<b>Average Ride Time</b>	23 minutes	25 minutes	+2 minutes





# TEAM 3 - Scenario 2 Scorecard

YES = 1  
NO = 0

Keeps Neighborhoods Intact	1
Reduces Overcapacity At Ashton	1
Reduces Overcapacity At Lakeview	1
Allows For Growth At Sarasota Middle School	0
Meets Population Number For K-8, 800 Elementary, 500 Middle	1
Does Not Require A Second Redistricting	0
Minimal Impact On Student Ride Times	1
Minimizes Hazardous Walking Conditions	1
Minimizes Impact on Transportation	1
Fits Into Overall Growth Plan for School District and New Schools Planned For Future	1
Supports The District's Portable Reduction Plan	1
Aligns With Strategic Plan Goal Of Pre-K and Specialized Programs at ALL Elementary Schools	1
<b>TEAM 3 – SCENARIO 2 SCORE</b>	<b>10</b>

SCHOOL	Perm. FISH Capacity	Current # of Portables	24-25 10- Day Count Resident Students	% of Resident Student Utilization	Students Remaining After Rebalance	Total Students Rebalanced	Projected % Utilization	Projected # Portables
Ashton Elementary	734	36	1,018	139%	855	226	116%	0
Lakeview Elementary	594	15	994	167%	669	324	113%	4
Sarasota Middle School	1,406	8	1,522	108%	1,343	179	96%	0
Skye Ranch K-8 School	1,382	-	-	-	-	729	53%	0

## Transportation Costs and Ride Times:

	Current	Projected	Difference
Cost	\$476,680.50	\$493,951.50	\$17,271.00
Average Ride Time	23 minutes	25 minutes	+2 minutes



# TEAM 3 - Scenario 3 Scorecard

YES = 1  
NO = 0

## OBJECTIVE

Keeps Neighborhoods Intact	1
Reduces Overcapacity At Ashton	0
Reduces Overcapacity At Lakeview	1
Allows For Growth At Sarasota Middle School	1
Meets Population Number For K-8, 800 Elementary, 500 Middle	0
Does Not Require A Second Redistricting	0
Minimal Impact On Student Ride Times	1
Minimizes Hazardous Walking Conditions	1
Minimizes Impact on Transportation	1
Fits Into Overall Growth Plan for School District and New Schools Planned For Future	1
Supports The District's Portable Reduction Plan	1
Aligns With Strategic Plan Goal Of Pre-K and Specialized Programs at ALL Elementary Schools	1
<b>TEAM 3 – SCENARIO 3 SCORE</b>	<b>9</b>

SCHOOL	Perm. FISH Capacity	Current # of Portables	24-25 10-Day Count Resident Students	% of Resident Student Utilization	Students Remaining After Rebalance	Total Students Rebalanced	Projected % Utilization	Projected # Portables
Ashton Elementary	734	36	1,018	139%	769	323*	105%	2
Lakeview Elementary	594	15	994	167%	575	419	97%	0
Wilkinson Elementary	786	0	668	85%	991	0	126%	11
Sarasota Middle School	1,406	8	1,522	108%	1275	247	91%	0
Skye Ranch School K-8	1,382	-	-	-	666	666	<b>48%</b>	<b>0%</b>

\*Students rebalanced from Ashton to Wilkinson.

## Transportation Costs and Ride Times:

	Current	Projected	Difference
Cost	\$565,805.50	\$565,812.90	\$7,077.40
Average Ride Time	24 minutes	26 minutes	+2 minutes



# Team 3 Final Ranking

## Team 3 – Ashton Elementary

## RANK

**Scenario 1**

**3**

**Scenario 2**

**1**

**Scenario 3**

**2**





# Summary of Results



Team 1 Ranking	
Scenario 1	1
Scenario 2	2
Scenario 3	3

Team 2 Ranking	
Scenario 1	1
Scenario 2	2
Scenario 3	3

Team 3 Ranking	
Scenario 1	3
Scenario 2	1
Scenario 3	2

#1 Rankings	
Scenario 1	2
Scenario 2	1
Scenario 3	0





# The Collective Result & Recommendation

2 of the 3 B.A.C. Teams ranked Scenario 1 as the top ranked scenario satisfying the most primary, operational, and best practice variable considered to best meet the redistricting effort for Skye Ranch School K-8.

**RECOMMENDATION:** The District team’s professional recommendation to the Superintendent is to adopt Scenario 1 as it:

1. Best meets the primary and operational variables aligning with redistricting best practices.
2. Honors the collaborative result established by the Boundary Advisory Committee.



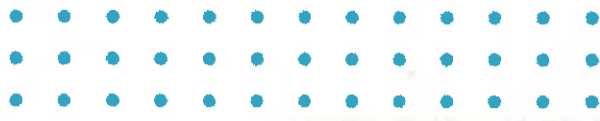


# GUIDELINES FOR CHOICE



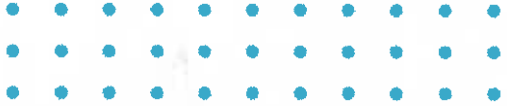


# Will redistricted **ELEMENTARY** school students be allowed to remain at their school?



## **This depends on the following:**

1. Skye Ranch School will open with grades K-6 in 2025-26.
2. Skye Ranch School will expand to 7th grade in 2026-27.
3. Skye Ranch School will expand to 8th grade in 2027-28.
4. Rising 4th graders will have the option to remain at their current site for their final year. This is in alignment of School Board Policy 5.20. C5.
  - a. When attendance boundaries are changed, elementary and secondary students with one (1) year remaining in their present school will have the option of remaining at that school. This shall not automatically entitle the student to district transportation. When considering attendance boundary adjustments, the Board by its own discretion may extend the option to other students with more than one (1) year remaining.







# REMINDERS

- This is a K-5 to K-8, not a K-5 to K-5 redistrict effort.
- While Board policy does allow for 4th graders to remain, parents should weigh the pros and cons associated with a delay in transitioning with the inaugural peer cohort to Skye Ranch in which they will remain together for 4 years (grade 5 – 8).





# Guidelines for Choice



**Will redistricted MIDDLE school students be allowed to remain at their school?**

- **YES.** 7<sup>th</sup> and 8<sup>th</sup> graders in the new attendance zone for 2025-26 will NOT be impacted.
- Phasing in additional grades will require them to remain at Sarasota Middle School.



**If my student is a current Choice student, can he/she remain at their currently assigned school as a Choice student?**

- Yes, as defined by Florida Statute 1002.31, all current students on traditional Choice (COE) at Ashton, Lakeview, or Sarasota Middle may remain at the chosen school by the parent until the student completes the highest grade level at that school.

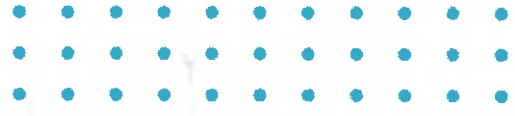




# Guidelines for Choice



**If my student is a current Reassignment student, can he/she remain at their currently assigned school as a Reassigned student?**



- Per SCS procedures, all current students on reassignment at Ashton, Lakeview, or Sarasota Middle may remain at the chosen school by the parent until the student completes the highest grade level at that school.

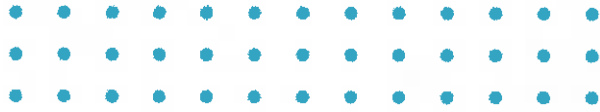
**If I am rezoned, can I apply for Choice to remain at my current school?**

- If the adjusted enrollment after rebalancing is less than 90% capacity, Choice and Reassignments will be evaluated in accordance with current policies/procedures.





# Guidelines for Choice



**If my child is remaining at the current school (ex. 5th grader), will a younger sibling be permitted to attend?**

- This depends. The younger sibling(s) can apply for Choice/Reassignment and may be placed in accordance with current policies/procedures.







# FREQUENTLY ASKED QUESTIONS





# Frequently Asked Questions



## Why is the school not opening with all grades, Kindergarten through Eighth Grade (K-8)?

Skye Ranch School opens August 2025 with Kindergarten through Sixth Grade. SCS District Staff visited other counties who recently opened a K-8 configuration to capitalize on implementation lessons learned. The team learned districts recommended a phased-in transition was more conducive to successfully open K-8 Schools at the lower grade levels and phasing students into the upper grades.



## What is the student data based on, and does it include Sarasota Middle School students that will not be able to attend Skye Ranch School for the next 2 years and those in the PGA Gifted Program?

Yes, all middle school students which live within the proposed Scenario attendance boundary including Kindergarten through Eighth Grade are included in the projections and utilization rates to ensure we provide a financially feasible scenario with enough students in all schools affected by the rebalancing.





# Frequently Asked Questions



## Why does Skye Ranch School not have a 10 Day Student Count?

The 2024-25 10 Day Count is the number of students enrolled in Ashton Elementary, Lakeview Elementary and Sarasota Middle School on August 16, 2024. Skye Ranch School is not open yet therefore they do not have students currently enrolled on that date.



## Will the same electives, athletic programs and other programs like choir, school newspaper etc. be offered for Sixth Grade Students next year.

No. Schools will be the same academically but athletics and other after school programs are currently being devised for when all grade levels attend Skye Ranch School. The rebalancing process includes the District Team facilitating and providing information for the BAC to provide feedback to expand the successful similar models of the three similar schools to set all schools up for success.



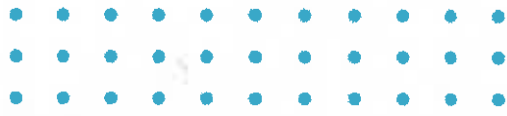


# Frequently Asked Questions



## How is Free and Reduced Lunch (FRL) going to impact the schools?

None of the schools involved in the rebalancing will become Title I Schools and all are projected to be under 45% FRL.



## What happens to students that continue to attend Ashton Elementary, Lakeview Elementary and Sarasota Middle School which, through an address audit, are found to no longer reside within their attendance zone?

School Board Policy 5.201 permits families that move out of an attendance zone to apply for Reassignment to remain at the school of origin. If it is found that a family falsified information resulting in improper assignment, the student will be withdrawn from the assigned school and transferred (without regard to parental preference) to their districted school.







# Frequently Asked Questions



**If Skye Ranch School becomes overcapacity due to all the proposed growth in the area, will they have portables?**

Yes, but Skye Ranch School has identified a location for a future classroom wing addition on the school site. The K-8 school site was purchased in 2019 as part of the LT Ranch 2050 Village MDO to provide school capacity for the anticipated growth and to relieve overcapacity at nearby schools. To warrant the need to open a new school, current schools must be overcapacity to allow for a Financially Feasible new school to operate including costs of purchasing property, construction of a new school, projected students to open a new school and staffing.



**What happened with the previous school site in Palmer Ranch?**

The School Board sold the property back to the Master Developer due to the economic crash in 2008 which halted new development and resulted in declining growth as families with students were not moving into the area.





# Frequently Asked Questions



## **Will the south school site relieve Laurel Nokomis K-8 School?**

The exact location of the school site has yet to be determined. The approximate location was provided to assist the BAC in understanding potential future school sites that may impact meeting the primary objective to minimize the redistricting of a student multiple times. The School District is currently working with the developer and local government to identify a school site as required in the Unified Land Development Code.



## **Has the School Board addressed the safety of transporting K-8 students regarding the diverse age ranges on the same bus?**

Yes. The School Board currently transports K-8 students to Laurel Nokomis School and provides a seating chart assigning the younger students to the front of the bus. The School Bus Driver enforces the seating chart with the assistance of School Site Administrators if needed.





# Frequently Asked Questions



## How were transportation times and costs calculated?

The route times are based on the transporting students outside the 2-mile walking distance by each Scenario determining bus stop locations based on where the existing students reside. The projected costs for transportation were calculated with “deadhead miles”, miles a bus travels without students, from the closest Osprey Transportation Compound to the new K-8 School location. The costs include driver salaries, fuel and ancillary costs. The actual cost may be less when the actual Bus Routes are established due to the K-8 Bus Route including less deadhead miles by going to other school sites before and/or after traveling to the Skye Ranch School.



## If there is an incident on the bus what jurisdiction does that fall under?

The local jurisdiction in which the incident took place would be contacted to respond to incidents on the bus. The Sarasota County Schools Police Department would collaborate with the Sheriff’s Office or local law enforcement department regarding any incidents.





# Frequently Asked Questions



## **What are the proposed Strategic Plan Goals of Pre-K and Specialized Programs at all elementary schools?**

The School District's goal is to offer early learning opportunities through the State's Voluntary Pre-Kindergarten (VPK) program in all elementary schools in the next two years. There are other programs and students with profound needs which the School District needs to ensure we can meet the needs of each student at our schools by providing appropriate staffing and school spaces to meet School Board Policies and Florida Statutes.



## **Why was reducing overcapacity at Sarasota Middle School not included in the objectives?**

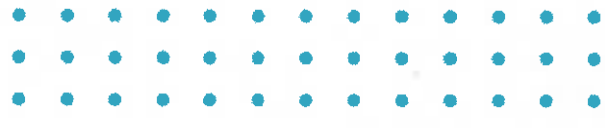
Sarasota Middle is not currently overcapacity but nearing capacity. Rebalancing would allow for growth and expansion of magnet program.







# Frequently Asked Questions



## **Will the Boundary Advisory Committee (B.A.C.) continue to meet?**

No, the BAC's work is complete and will no longer need to meet. The SCS District Team appreciates the BAC's genuine leadership, willingness to serve, and commitment to the process.





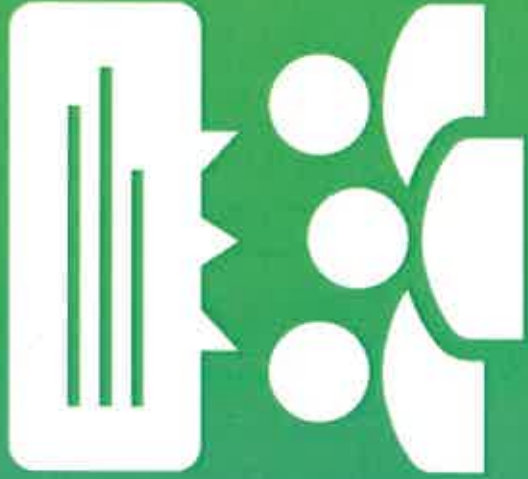
# Frequently Asked Questions



## How are the Scenarios going to be presented and will the School Board see the Scenario Scorecards?

The BAC's input regarding the three feasible scenarios reviewed will be presented to the School Board at the November 6, 2024, School Board Workshop. Scorecards for each scenario as well as final rankings provided by the BAC will be shared. A public information meeting will be conducted prior to the November 19th, School Board Meeting for the public to provide input on the attendance boundary recommendations for Skye Ranch School. On November 19, 2024, the Board will take into consideration information provided at the workshop, the BAC's committee input and rankings; public comment, and the superintendent/staff recommendations regarding the three attendance zone scenarios considered for Skye Ranch K-8. The Sarasota County School Board will make the final decision on the adoption of the required redistricting to open Skye Ranch K-8 in August 2025.





# QUESTIONS?





**EVERY STUDENT. EVERY DAY!**